

MECHANICAL GENERAL NOTES

- 1 PRIOR TO PREPARING THE BID, IT IS RECOMMENDED THAT THE CONTRACTOR AND SUBCONTRACTORS VISIT THE SITE TO FAMILIARIZE THEMSELVES WITH ALL EXISTING CONDITIONS AND MAKE ALL NECESSARY INVESTIGATIONS AS TO THE LOCATIONS OF UTILITIES AND ALL OTHER MATTERS WHICH CAN AFFECT THE WORK. NO ADDITIONAL COMPENSATION WILL BE MADE TO THE CONTRACTOR AS A RESULT OF THEIR FAILURE TO FAMILIARIZE THEMSELVES WITH THE EXISTING CONDITIONS UNDER WHICH THE WORK MUST BE PERFORMED.

MECHANICAL DEMOLITION NOTES

- 1 NOTIFY THE OWNER, IN WRITING, AT LEAST TEN (10) DAYS IN ADVANCE OF ALL REQUIRED UTILITY OR SYSTEM SHUTDOWNS. UPON WRITTEN RECEIPT OF APPROVAL FROM OWNER, SHUTDOWN SHALL BE PERFORMED BETWEEN THE HOURS OF SIX (6) P.M. AND SIX (6) A.M. OR AS DIRECTED OTHERWISE BY THE OWNER AND SHALL BE ACCOMPLISHED AT NO ADDITIONAL COST TO THE CONTRACTOR. AT THE END OF EACH SHUTDOWN ALL SERVICES SHALL BE RESTORED SO THAT NORMAL USE OF THE UTILITIES AND SYSTEMS CAN CONTINUE.

MECHANICAL SYMBOLS

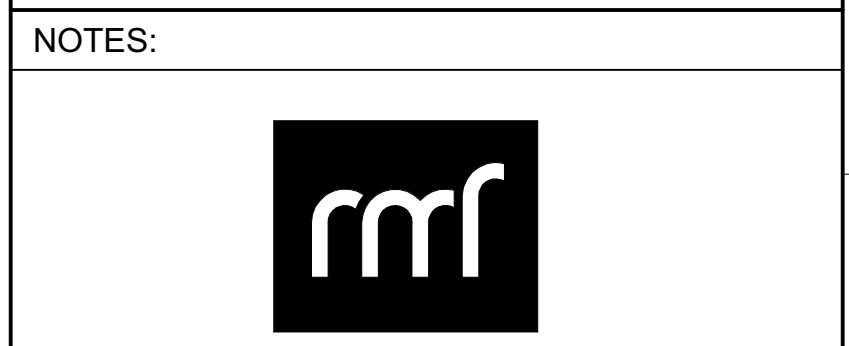
Table with columns for SYMBOL, EQUIPMENT DESIGNATIONS, and DESCRIPTION. Includes symbols for air handling units, sensors, dampers, and ductwork.

MECHANICAL ABBREVIATIONS

Table listing various mechanical abbreviations such as HTHS (High Temperature Heating Water Supply), HWT (Hot Water), and HZ (Hot Water Recirculation).



NOTES:
© COPYRIGHT 2004 CAPLEA COE ARCHITECTS, INC.
THIS DRAWING HAS BEEN PREPARED BY CAPLEA COE ARCHITECTS, INC. FOR THE PROJECT AND IS AN INSTRUMENT OF PROFESSIONAL SERVICE FOR THE USE ONLY WITH RESPECT TO THIS PROJECT. THE ARCHITECT SHALL BE DEEMED THE AUTHOR OF THE DRAWING AND SHALL RETAIN ALL COMMON LAW, STATUTORY AND OTHER RESERVED RIGHTS, INCLUDING THE COPYRIGHT.



RMF ENGINEERING, INC.
194 SEVEN FARMS DRIVE
SUITE G
CHARLESTON, SC 29492
P: 843-971-9639 F: 843-971-9641

Table with columns for REVISIONS and a large empty space for notes or additional information.

Early Release Package

CONWAY COSMETOLOGY EXPANSION BUILDING 500-600
2050 E HIGHWAY 501, CONWAY, SC 29526

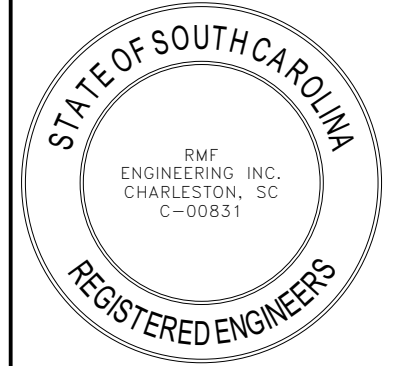


MECHANICAL NOTES, SYMBOLS AND ABBREVIATIONS

Table with project details including Project Number (03240044.A0), Checked By (JM), Date (07/03/2024), and Scale (As indicated).

DRAWING NOTES

- 1 PROVIDE SPRING ISOLATED SEISMIC CURB SUPPORT FOR THE DEDICATED OUTDOOR AIR UNIT.
- 2 PROVIDE SEISMIC CURB SUPPORT FOR THE EXHAUST FAN.



SEALS

© COPYRIGHT 2024 CAPLEA COE ARCHITECTS, INC.
 THIS DRAWING HAS BEEN PREPARED BY CAPLEA COE ARCHITECTS, INC. FOR THE PROJECT AND IS AN INSTRUMENT OF THE ARCHITECT'S SERVICE FOR THE USE SOLELY WITH RESPECT TO THIS PROJECT. THE ARCHITECT SHALL BE DEEMED THE AUTHOR OF THIS DOCUMENT AND SHALL RETAIN ALL COMMON LAW, STATUTORY AND OTHER RESERVED RIGHTS, INCLUDING THE COPYRIGHT.

NOTES:



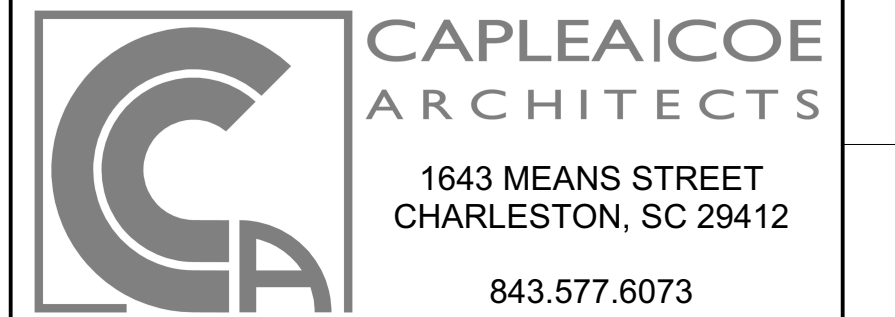
RMF ENGINEERING, INC.
 194 SEVEN FARMS DRIVE
 SUITE G
 CHARLESTON, SC 29492
 P: 843-971-9639 F: 843-971-9641

REVISIONS

Early Release Package

**CONWAY
 COSMETOLOGY
 EXPANSION BUILDING
 500-600**

2050 E HIGHWAY 501, CONWAY, SC 29526



**MECHANICAL DUCTWORK ROOF
 PLAN - NEW WORK**

SHEET NAME

PROJECT NUMBER
 03240044.A0

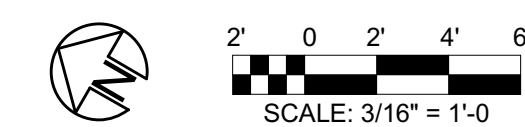
DRAWN BY
 JM

CHECKED BY
 RD

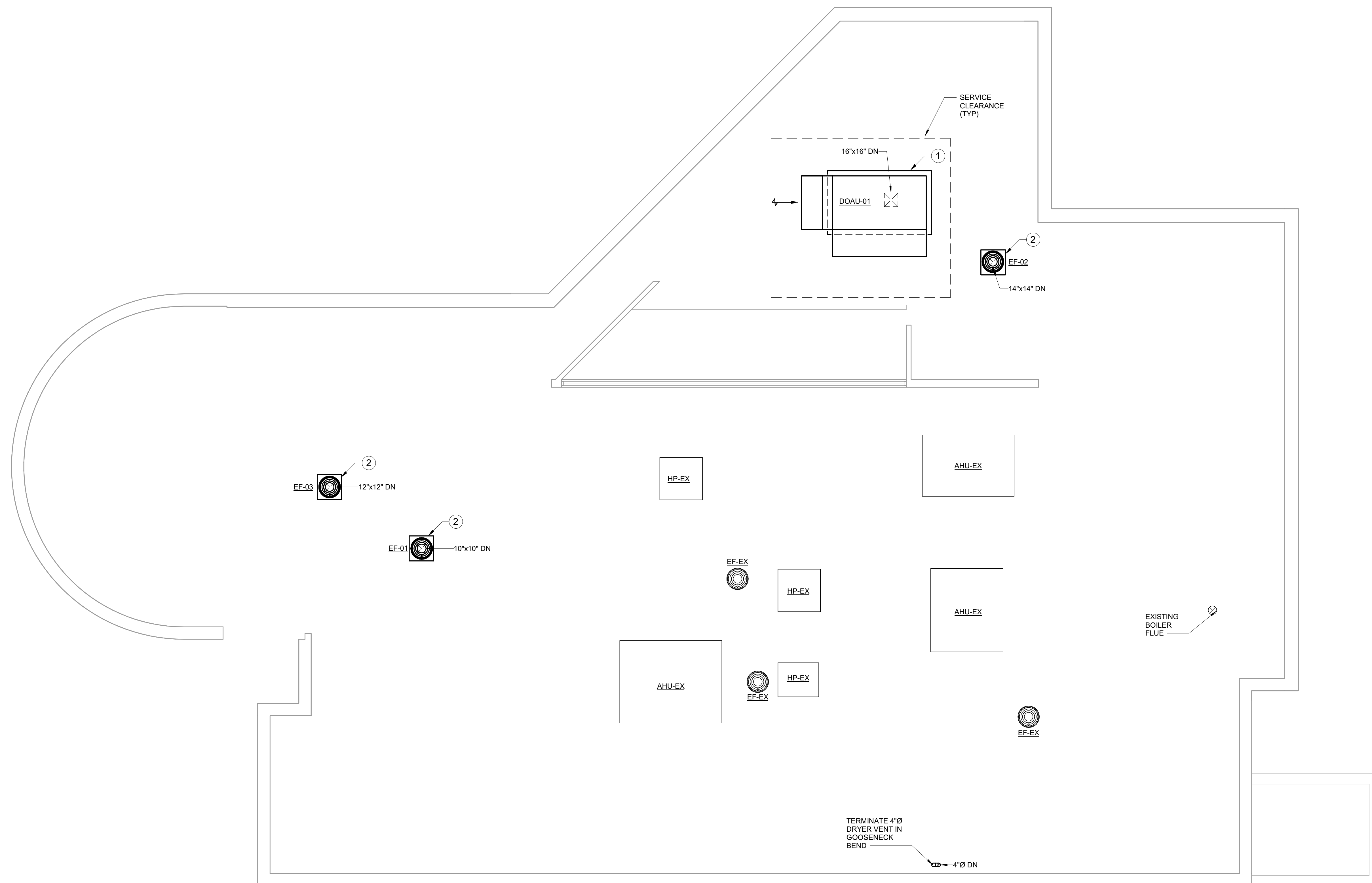
DATE
 07/03/2024

SCALE
 3/16" = 1'-0"

M102



MECHANICAL DUCTWORK ROOF PLAN - NEW WORK
 SCALE: 3/16" = 1'-0"



DEDICATED OUTDOOR AIR HANDLING UNIT SCHEDULE

DESIGNATION	LOCATION	SERVICE	AIRFLOW		FAN DATA		COOLING COIL DATA					HOT GAS REHEAT COIL DATA		NATURAL GAS HEATING COIL DATA				ELECTRICAL					BASIS OF DESIGN	REMARKS					
			CFM	MINIMUM OA CFM	HP	ESP (IN WG)	EAT °F		LAT °F		TOTAL CAPACITY (MBH)	SENSIBLE CAPACITY (MBH)	OUTDOOR AMBIENT °F DB	LAT °F	SENSIBLE CAPACITY (MBH)	EAT °F	LAT °F	TOTAL CAPACITY (MBH)	CFH	EER	WEIGHT (LBS)	VOLTS			PHASE	HERTZ	MOCP (A)	MCA (A)	FLA (A)
							DB	WB	DB	WB																			
DOAU-01	ROOF	COSMETOLOGY	2100	2100	1.0	1.2	82.5	80.0	50.0	49.5	223.4	74.7	90.4	72.0	50.6	28.1	70.0	95.3	95	16.1	3076	460	3	60	45	34.8	31.6	TRANE HORIZON	

HYDRONIC FAN COIL UNIT SCHEDULE

DESIGNATION	FAN				COOLING						HEATING				ELECTRICAL			BASIS OF DESIGN	REMARKS			
	CFM	ESP (IN H2O)	RPM	HP	EAT (°F)		LAT (°F)		MBH		GPM @ 42°F EWT 54°F LWT	MAX H2O PD (FT H2O)	EAT (°F)	LAT (°F)	MBH	GPM @ 160°F EWT 140°F LWT	MAX H2O PD (FT H2O)			VOLTS	PHASE	HERTZ
					DB	WB	DB	WB	TOTAL	SENSIBLE												
FCU-06	300	1.00	1750	0.5	75	62.5	55.0	54.5	7.1	6.6	1.2	5.0	70.0	84.0	4.6	0.5	5.0	115	1	60		

FAN SCHEDULE

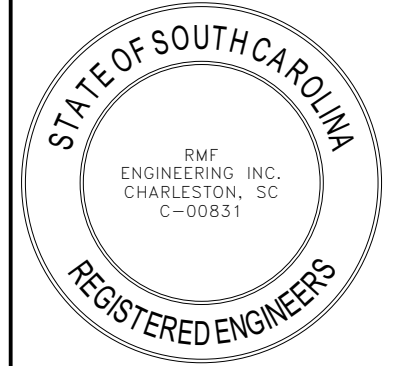
DESIGNATION	SERVICE	TYPE	CFM	SP INCH H2O	APPROX RPM	MOTOR		DRIVE	ELECTRICAL			VFD	EMERGENCY POWER	APPROX WEIGHT (LBS)	BASIS OF DESIGN	REMARKS
						BHP	HP		VOLTS	PHASE	HERTZ					
EF-01	EXHAUST	UPBLAST	330	0.25	1550	0.05	1/10	DIRECT	115	1	60	NO	NO	40	GREENHECK	
EF-02	EXHAUST	UPBLAST	980	1.0	1725	0.29	1/3	DIRECT	115	1	60	NO	NO	64	GREENHECK	
EF-03	EXHAUST	UPBLAST	605	0.75	1532	0.17	1/4	DIRECT	115	1	60	NO	NO	64	GREENHECK	

AIR DEVICE SCHEDULE

NUMBER	DUTY	TYPE	CFM		FACE/MODULE SIZE (IN)	NOMINAL DUCT SIZE (IN)	BLOW	MAX TOTAL AIR PD (IN H2O)	MAX NOISE CRITERIA VALUE	BASIS OF DESIGN		REMARKS
			MIN	MAX						MANUFACTURER	MODEL	
A1	SUPPLY	A	0	150	24"x24"	6"ø	4-WAY	0.10	25	TITUS	TDC	
A2	SUPPLY	A	151	250	24"x24"	8"ø	4-WAY	0.10	25	TITUS	TDC	
A3	SUPPLY	A	351	450	24"x24"	12"ø	4-WAY	0.10	25	TITUS	TDC	
A4	SUPPLY	A	451	750	24"x24"	14"ø	4-WAY	0.10	25	TITUS	TDC	
B1	RETURN	B	0	700	24"x24"	18"x18"	-	0.05	20	TITUS	PAR	
C1	EXHAUST	C	0	200	24"x24"	6"x6"	-	0.05	20	TITUS	PAR-AA	
D1	EXHAUST	D	0	150	8"x4"	8"x4"	-	0.05	20	TITUS	350R	

BUILDING DESIGN COMMISSIONING DATA

1.	OUTSIDE DESIGN CONDITIONS: SUMMER (DEHUMIDIFICATION): WINTER:	90.4°F DB / 77.9°F WB 82.5°F DB / 80.0°F WB 28.1°F
2.	GENERAL BUILDING CRITERIA: WALL U-FACTOR: ROOF U-FACTOR: GLASS U-FACTOR: GLASS SHADING COEFFICIENT:	0.043 0.048 0.29 0.287
3.	GENERAL BUILDING DESIGN LOAD REQUIREMENTS: LIGHTING: EQUIPMENT: PEOPLE (OFFICE-SENSIBLE): PEOPLE (OFFICE-LATENT): PEOPLE (WEIGHT ROOM-SENSIBLE): PEOPLE (WEIGHT ROOM-LATENT):	1.0 - 2 W/SF 1.5 - 2.5 W/SF 245 BTUH/PERSON 205 BTUH/PERSON 710 BTUH/PERSON 1090 BTUH/PERSON
4.	COMFORT HEATING: INTERIOR SPACES	70°F ±2°F
5.	COMFORT COOLING: INTERIOR SPACES	75°F ±2°F / 50% RH
6.	MINIMUM BUILDING POSITIVE PRESSURE:	0.05" WG
7.	GENERAL EXHAUST CRITERIA: TOILETS/URINALS: BEAUTY SALON: NAIL SALON: CUSTODIAL:	70 CFM/FIXTURE 0.6 CFM/SF 0.6 CFM/SF 50 CFM/FIXTURE
8.	CODES: INTERNATIONAL BUILDING CODE, 2021 INTERNATIONAL MECHANICAL CODE, 2021 INTERNATIONAL PLUMBING CODE, 2021 INTERNATIONAL ENERGY CONSERVATION CODE, 2009 NATIONAL ELECTRIC CODE, 2019 NATIONAL FIRE PROTECTION ASSOCIATION STANDARDS (LATEST EDITIONS)	



SEALS
© COPYRIGHT 2024 CAPLEA COE ARCHITECTS, INC.
THIS DRAWING HAS BEEN PREPARED BY CAPLEA COE ARCHITECTS, INC. FOR THE PROJECT AND IS AN INSTRUMENT OF THE ARCHITECT'S SERVICE FOR THE USE SOLELY WITH RESPECT TO THIS PROJECT. THE ARCHITECT SHALL BE DEEMED THE AUTHOR OF THIS DOCUMENT AND SHALL RETAIN ALL COMMON LAW, STATUTORY AND OTHER RESERVED RIGHTS, INCLUDING THE COPYRIGHT.

NOTES:



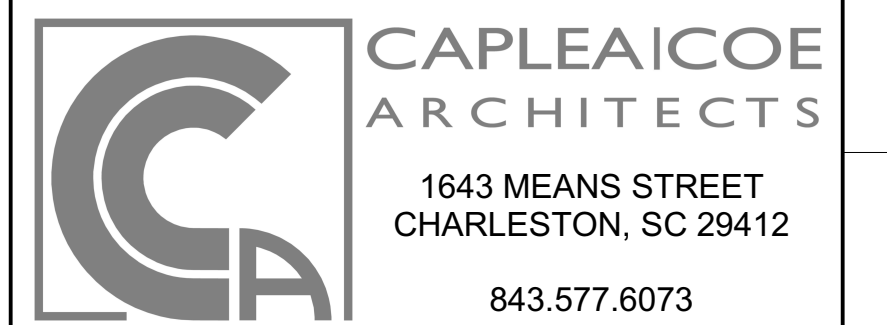
RMF ENGINEERING, INC.
194 SEVEN FARMS DRIVE
SUITE G
CHARLESTON, SC 29492
P: 843-971-9639 F: 843-971-9641

REVISIONS

Early Release Package

**CONWAY
COSMETOLOGY
EXPANSION BUILDING
500-600**

2050 E HIGHWAY 501, CONWAY, SC 29526



MECHANICAL SCHEDULES

SHEET NAME
PROJECT NUMBER
03240044.A0
DRAWN BY
JM
CHECKED BY
RD
DATE
07/03/2024
SCALE
12" = 1'-0"

M701