

**Batten, Melissa**  
VP, Student Affairs  
2  
Vice President  
83328  
UC04  
5  
VP  
Fore, Marilyn J.  
1

**Havens, Beth**  
Dir of Student Development  
218  
Student Services Manager II  
130409  
CB80  
2  
7  
Batten, Melissa R.  
2

**Hoppe, Heather**  
Registrar  
219  
Student Services Manager II  
19956  
CB80  
1  
7  
Batten, Melissa R.  
2

**Johnston, Cynthia**  
AVP Stud Enrollment Services  
220  
Student Services Manager II  
137943  
CB80  
3  
7  
Batten, Melissa R.  
2

**Lucas, Joseph**  
Director, Title III C3E Grant  
221  
Info Systems/Bus Ana II  
G15393  
AM03  
TGP  
6  
Batten, Melissa R.  
2

**Moore, Kathleen**  
Admin Asst, VP Student Affairs  
222  
Administrative Coordinator I  
83851  
AH10  
4  
5  
Batten, Melissa R.  
2

**Parler, Jennifer**  
Director of Student Engagement  
223  
Student Services Prog Coord II  
135265  
CB70  
15  
5  
Batten, Melissa R.  
2

**Havens, Beth**  
Dir of Student Development  
218  
Student Services Manager II  
130409  
CB80  
2  
7  
Batten, Melissa R.  
2

**Bowman, Lisa**  
Health Science Advisor  
35  
Student Services Prog Coord I  
G15402  
CB65  
TGP  
4  
Havens, Beth C.  
218

**Davis, Jaime**  
Student Development Coord.  
36  
Student Services Prog Coord II  
118457  
CB70  
5  
5  
Havens, Beth C.  
218

**Dove, Bonita**  
Student Development Coord.  
37  
Student Services Prog Coord II  
141452  
CB70  
11  
5  
Havens, Beth C.  
218

**Greer, Susan**  
Student Development Coord.  
38  
Student Services Prog Coord II  
137835  
CB70  
10  
5  
Havens, Beth C.  
218

**Hemingway, Betty**  
Student Development Coord.  
39  
Student Services Prog Coord II  
137834  
CB70  
9  
5  
Havens, Beth C.  
218

**Lewis, Destiny**  
Student Development Coord  
40  
Student Services Prog Coord II  
130408  
CB70  
4  
5  
Havens, Beth C.  
218

**Sawyer, Kristin**  
Career Counselor  
41  
Student Services Prog Coord II  
118397  
CB70  
7  
5  
Havens, Beth C.  
218

**Woodin, Natalie**  
Student Development Coord.  
42  
Student Services Prog Coord II  
137948  
CB70  
1  
5  
Havens, Beth C.  
218

**Wright, Shawn**  
Client Support Representative  
43  
IT Services Specialist II  
147415  
AM61  
1  
4  
Havens, Beth C.  
218

**Yanaros, Nicholas**  
Client Support Representative  
44  
IT Services Specialist II  
116568  
AM61  
2  
4  
Havens, Beth C.  
218

Davis, Jaime  
Student Development Coord.  
36  
Student Services Prog Coord II  
118457  
CB70  
5  
5  
Havens, Beth C.  
218

Epps, Savannah  
Admin Spec, Student Affairs GT  
306  
Administrative Spec II  
139166  
AA50  
9  
3  
Davis, Jaime L.  
36

Hoppe, Heather  
Registrar  
219  
Student Services Manager II  
19956  
CB80  
1  
7  
Batten, Melissa R.  
2

Ariail, Christopher  
Assistant Registrar  
59  
Student Services Prog Coord II  
19963  
CB70  
8  
5  
Hoppe, Heather M.  
219

Cannon, Vanessa  
Dir. of Admissions Operations  
60  
Student Services Prog Coord II  
94010  
CB70  
12  
5  
Hoppe, Heather M.  
219

Hill-Starks, Tara  
Director of Testing Services  
61  
Student Services Prog Coord II  
139213  
CB70  
6  
5  
Hoppe, Heather M.  
219

Yanaros, Kristin  
Student Data Analyst  
62  
Operations Assistant II  
116566  
AH74  
1  
4  
Hoppe, Heather M.  
219

Ariail, Christopher  
Assistant Registrar  
59  
Student Services Prog Coord II  
19963  
CB70  
8  
5  
Hoppe, Heather M.  
219

Barnhill, Julia  
Administrative Spec, Registrar  
201  
Administrative Spec II  
86807  
AA50  
3  
3  
Ariail, Christopher T.  
59

Frederick, Timothy  
Program Assistant  
202  
Program Assistant  
135652  
AH30  
4  
4  
Ariail, Christopher T.  
59

Cannon, Vanessa  
Dir. of Admissions Operations  
60  
Student Services Prog Coord II  
94010  
CB70  
12  
5  
Hoppe, Heather M.  
219

Jones, Heather  
Program Assistant  
255  
Program Assistant  
135374  
AH30  
10  
4  
Cannon, Vanessa G.  
60

Perkins, Mary  
Program Assistant  
256  
Program Assistant  
137168  
AH30  
5  
4  
Cannon, Vanessa G.  
60

Thompkins, Tiffany  
Program Assistant  
257  
Program Assistant  
137940  
AH30  
3  
4  
Cannon, Vanessa G.  
60

**Johnston, Cynthia**  
AVP Stud Enrollment Services  
220  
Student Services Manager II  
137943  
CB80  
3  
7  
Batten, Melissa R.  
2

**Dendy, Morgan**  
Recruiter/Communications Coord  
71  
Student Services Prog Coord II  
139169  
CB70  
16  
5  
Johnston, Cynthia A.  
220

**Garner, April**  
Director, Career Services  
72  
Student Services Prog Coord II  
137939  
CB70  
3  
5  
Johnston, Cynthia A.  
220

**Grooms, Ellen**  
Recruitment Coordinator  
73  
Student Services Prog Coord II  
135273  
CB70  
13  
5  
Johnston, Cynthia A.  
220

**Holman, Leslie**  
Student Serv.& Residency Coord  
74  
Student Services Prog Coord II  
137935  
CB70  
18  
5  
Johnston, Cynthia A.  
220

**Wofford, Hope**  
Dual Enrollment Director  
75  
Student Services Prog Coord II  
82015  
CB70  
17  
5  
Johnston, Cynthia A.  
220



Grooms, Ellen  
Recruitment Coordinator  
73  
Student Services Prog Coord II  
135273  
CB70  
13  
5  
Johnston, Cynthia A.  
220

Nettles, Jessica  
Recruiter  
28  
Student Services Prog Coord II  
130429  
CB70  
14  
5  
Grooms, Ellen H.  
73

Holman, Leslie  
Student Serv.& Residency Coord  
74  
Student Services Prog Coord II  
137935  
CB70  
18  
5  
Johnston, Cynthia A.  
220

Rebolini, Mary  
Admin Spec, Admissions  
53  
Administrative Spec II  
124779  
AA50  
22  
3  
Holman, Leslie M.  
74

Sartori, Michelle  
Admin Spec, Student Affairs  
54  
Administrative Spec II  
19965  
AA50  
5  
3  
Holman, Leslie M.  
74

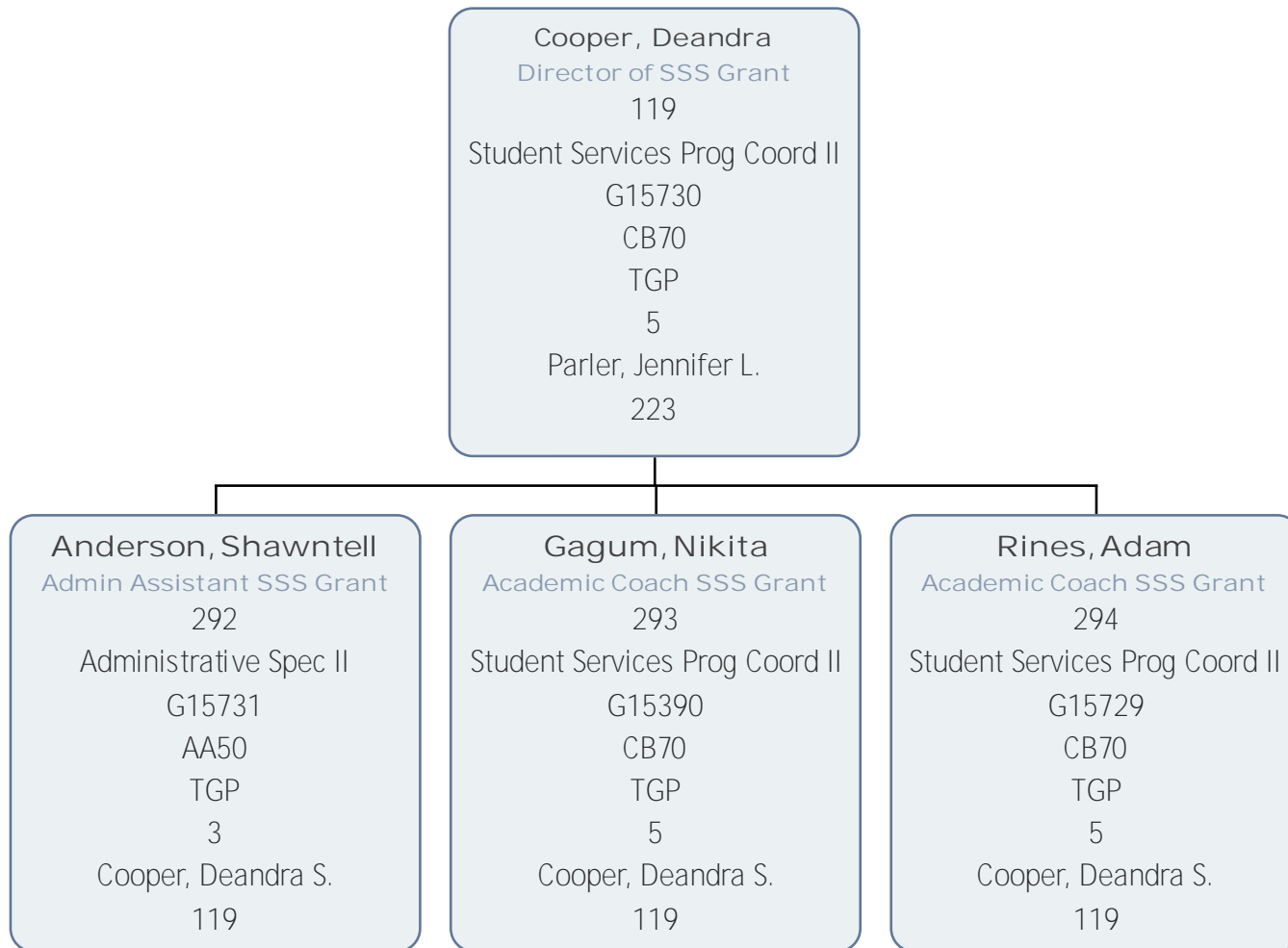
Wofford, Hope  
Dual Enrollment Director  
75  
Student Services Prog Coord II  
82015  
CB70  
17  
5  
Johnston, Cynthia A.  
220

Rhodes, Donna  
Program Assistant  
171  
Program Assistant  
137819  
AH30  
6  
4  
Wofford, Hope K.  
75

Parler, Jennifer  
Director of Student Engagement  
223  
Student Services Prog Coord II  
135265  
CB70  
15  
5  
Batten, Melissa R.  
2

Cooper, Deandra  
Director of SSS Grant  
119  
Student Services Prog Coord II  
G15730  
CB70  
TGP  
5  
Parler, Jennifer L.  
223

Dalton, Melissa  
Director Upward Bound  
120  
Student Services Prog Coord II  
G15394  
CB70  
TGP  
5  
Parler, Jennifer L.  
223



**Dalton, Melissa**  
Director Upward Bound  
120  
Student Services Prog Coord II  
G15394  
CB70  
TGP  
5  
Parler, Jennifer L.  
223

**Parker, Carlos**  
Counselor/Coord Upward Bound  
299  
Student Services Prog Coord II  
G15395  
CB70  
TGP  
5  
Dalton, Melissa B.  
120

Dove, John  
VP of Technology Solutions  
4  
Vice President  
108999  
UC04  
1  
VP  
Fore, Marilyn J.  
1

Finn, Mark  
Dir of Network Admin & Telecom  
308  
IT Manager I  
130312  
AM55  
1  
7  
Dove, John P.  
4

Hager, Mary  
Admin Asst, IT & Inst'l Rsrch  
309  
Administrative Coordinator I  
86143  
AH10  
11  
5  
Dove, John P.  
4

Quaresimo, Terry  
Dir of Enterprise Systems  
310  
IT Manager II  
116567  
AM56  
3  
8  
Dove, John P.  
4

Stanley, Lewis  
Dir of Client Support Services  
311  
IT Supervisor II  
137804  
AM51  
3  
6  
Dove, John P.  
4

Quaresimo, Terry  
Dir of Enterprise Systems  
310  
IT Manager II  
116567  
AM56  
3  
8  
Dove, John P.  
4

Blanding, Marvenia  
Business Analyst  
121  
Info Systems/Bus Ana II  
101444  
AM03  
5  
6  
Quaresimo, Terry L.  
310

Carroll, Randy  
Enterprise Systems Admin II  
122  
IT Security Specialist/Ana I  
135274  
AM80  
1  
6  
Quaresimo, Terry L.  
310

Dill, Kandi  
Business Analyst  
123  
Info Systems/Bus Ana II  
93518  
AM03  
4  
6  
Quaresimo, Terry L.  
310

Tavernier, Pierre-Alexander  
Enterprise Systems Admin I  
124  
Info Systems/Bus Ana II  
130316  
AM03  
6  
6  
Quaresimo, Terry L.  
310



**Stanley, Lewis**  
Dir of Client Support Services  
311  
IT Supervisor II  
137804  
AM51  
3  
6  
Dove, John P.  
4

**Brookins III, Joseph**  
Technology Support Rep.  
136  
IT Services Specialist III  
148257  
AM62  
7  
5  
Stanley, Lewis  
311

**Gregg, Travis**  
Technology Support Rep  
137  
IT Services Specialist III  
137820  
AM62  
2  
5  
Stanley, Lewis  
311

**Johnson, David**  
Technology Support Rep.  
138  
IT Services Specialist III  
146816  
AM62  
3  
5  
Stanley, Lewis  
311

**Matthews, Jeffrey**  
Technology Support Rep.  
139  
IT Technician III  
139186  
AM72  
1  
6  
Stanley, Lewis  
311

**Murphy, Mariah**  
Technology Support Rep  
140  
IT Services Specialist III  
20022  
AM62  
6  
5  
Stanley, Lewis  
311

**Prince, Kyle**  
Client Support Administrator  
141  
IT Supervisor II  
139146  
AM51  
2  
6  
Stanley, Lewis  
311

**Purvis, Dottie**  
Technology Support Rep.  
142  
IT Services Specialist III  
130306  
AM62  
4  
5  
Stanley, Lewis  
311

**Shaw, Tausha**  
Client Support Administrator  
143  
IT Supervisor II  
116551  
AM51  
1  
6  
Stanley, Lewis  
311

Hawley, Harold  
VP for Finance & Admin  
5  
Vice President  
108998  
UC04  
3  
VP  
Fore, Marilyn J.  
1

Black, Ellen  
AVP/Controller  
45  
Assistant Vice President  
105186  
UC63  
1  
VPAS  
Hawley, Harold N.  
5

Brown, Kevin  
Superintendent of Bldg/Grounds  
46  
Engineer Assoc Engineer III  
102835  
HD70  
1  
7  
Hawley, Harold N.  
5

Cecala, Dianna  
Procurement Manager  
47  
Procurement Manager II  
107095  
AC40  
1  
7  
Hawley, Harold N.  
5

Lea, Maritza  
Admin Asst. Business Affairs  
48  
Administrative Coordinator I  
130428  
AH10  
1  
5  
Hawley, Harold N.  
5

Black, Ellen  
AVP/Controller  
45  
Assistant Vice President  
105186  
UC63  
1  
VPAS  
Hawley, Harold N.  
5

Dease, Jacquelyn  
Accountant/Fiscal Ana II  
224  
Accountant/Fiscal Analyst II  
86611  
AD22  
6  
5  
Black, Ellen M.  
45

Furgerson, Jennifer  
Student Accounts Supervisor  
225  
Accountant/Fiscal Analyst II  
21218  
AD22  
1  
5  
Black, Ellen M.  
45

Sellers, Sandra  
Assistant Controller  
226  
Accountant/Fiscal Ana III  
139509  
AD25  
2  
6  
Black, Ellen M.  
45

Thompson, Susan  
Dir Financial Aid & Vet Affair  
227  
Financial Aid Manager II  
85159  
AD87  
1  
7  
Black, Ellen M.  
45

Toben, Kristen  
Accountant  
228  
Accountant/Fiscal Ana III  
134780  
AD25  
1  
6  
Black, Ellen M.  
45

Dease, Jacquelyn  
Accountant/Fiscal Ana II  
224  
Accountant/Fiscal Analyst II  
86611  
AD22  
6  
5  
Black, Ellen M.  
45

Gresh, Brenda  
Financial Accounting Tech  
307  
Fiscal Tech II  
84752  
AD03  
3  
4  
Dease, Jacquelyn P.  
224

Furgerson, Jennifer  
Student Accounts Supervisor  
225  
Accountant/Fiscal Analyst II  
21218  
AD22  
1  
5  
Black, Ellen M.  
45

Jamison-Godbolt, Cashonda  
Student Receivables Accountant  
13  
Accountant/Fiscal Analyst II  
19962  
AD22  
2  
5  
Furgerson, Jennifer L.  
225

Spry, Yvonne  
Student Accounts Technician  
14  
Fiscal Tech II  
82087  
AD03  
4  
4  
Furgerson, Jennifer L.  
225

Vereen, Wanda  
Student Accounts Technician  
15  
Fiscal Tech II  
19970  
AD03  
2  
4  
Furgerson, Jennifer L.  
225

Spry, Yvonne  
Student Accounts Technician  
14  
Fiscal Tech II  
82087  
AD03  
4  
4  
Furgerson, Jennifer L.  
225

Jenerette, Kimberly  
Student Accounts Tech  
134  
Fiscal Tech I  
148484  
AD01  
1  
3  
Spry, Yvonne M.  
14

Sanders, Brenda  
Cashier, Business Office  
135  
Administrative Spec I  
130336  
AA25  
5  
2  
Spry, Yvonne M.  
14

**Thompson, Susan**  
Dir Financial Aid & Vet Affairs  
227  
Financial Aid Manager II  
85159  
AD87  
1  
7  
Black, Ellen M.  
45

**Burgess, Windi**  
Mgr, Client Svcs & Vet Affairs  
149  
Financial Aid Coordinator  
137944  
AD82  
1  
5  
Thompson, Susan D.  
227

**Butler, Deborah**  
Admin Spec, Financial Aid  
150  
Administrative Spec II  
139167  
AA50  
11  
3  
Thompson, Susan D.  
227

**Callahan, Scott**  
Mgr, FA Technical Services  
151  
Financial Aid Tech Svcs Mgr  
137857  
AD92  
1  
5  
Thompson, Susan D.  
227

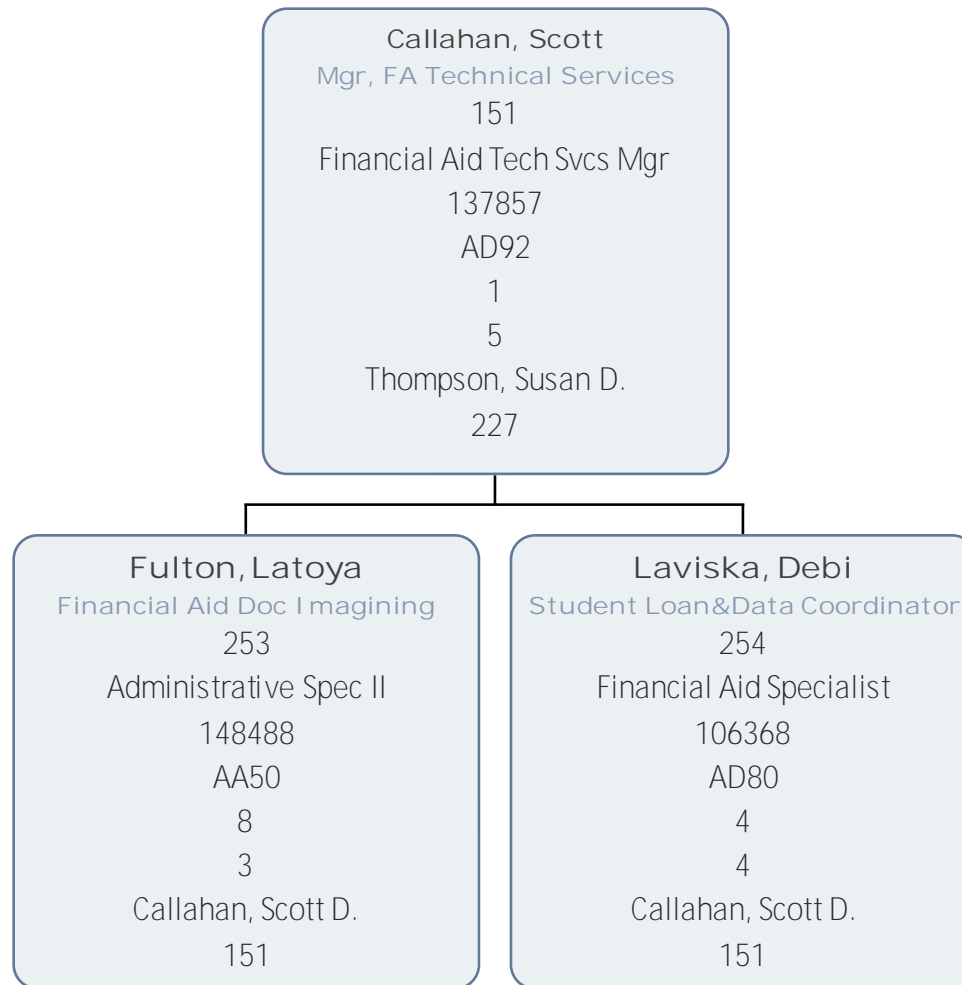
**Hardwick, Lucinda**  
Mgr of Verification & Awarding  
152  
Financial Aid Coordinator  
19977  
AD82  
3  
5  
Thompson, Susan D.  
227

**Orning, Helen**  
Compliance Counselor  
153  
Financial Aid Coordinator  
19456  
AD82  
2  
5  
Thompson, Susan D.  
227

Burgess, Windi  
Mgr, Client Svcs & Vet Affairs  
149  
Financial Aid Coordinator  
137944  
AD82  
1  
5  
Thompson, Susan D.  
227

Thompson, Sarah  
Admin Spec, Financial Aid  
239  
Administrative Spec II  
116539  
AA50  
7  
3  
Burgess, Windi N.  
149





Hardwick, Lucinda  
Mgr of Verification & Awarding  
152  
Financial Aid Coordinator  
19977  
AD82  
3  
5  
Thompson, Susan D.  
227

Harris, Taheisha  
Financial Aid Specialist  
30  
Financial Aid Specialist  
107094  
AD80  
1  
4  
Hardwick, Lucinda H.  
152

Paulson, Christopher  
Financial Aid Specialist  
31  
Financial Aid Specialist  
94323  
AD80  
3  
4  
Hardwick, Lucinda H.  
152

Toben, Kristen  
Accountant  
228  
Accountant/Fiscal Ana III  
134780  
AD25  
1  
6  
Black, Ellen M.  
45

Maszle, Leslie  
Payroll Manager  
161  
Accountant/Fiscal Analyst II  
138098  
AD22  
5  
5  
Toben, Kristen M.  
228

Maszle, Leslie  
Payroll Manager  
161  
Accountant/Fiscal Analyst II  
138098  
AD22  
5  
5  
Toben, Kristen M.  
228

Hardee, Christina  
Payroll Specialist  
80  
Fiscal Tech II  
148301  
AD03  
1  
4  
Maszle, Leslie E.  
161

**Brown, Kevin**  
Superintendent of Bldg/Grounds  
46  
Engineer Assoc Engineer III  
102835  
HD70  
1  
7  
Hawley, Harold N.  
5

**Lavigne, Scott**  
Maint Supervisor, Grand Strand  
235  
Trades Specialist IV  
135268  
KC40  
4  
4  
Brown, Kevin R.  
46

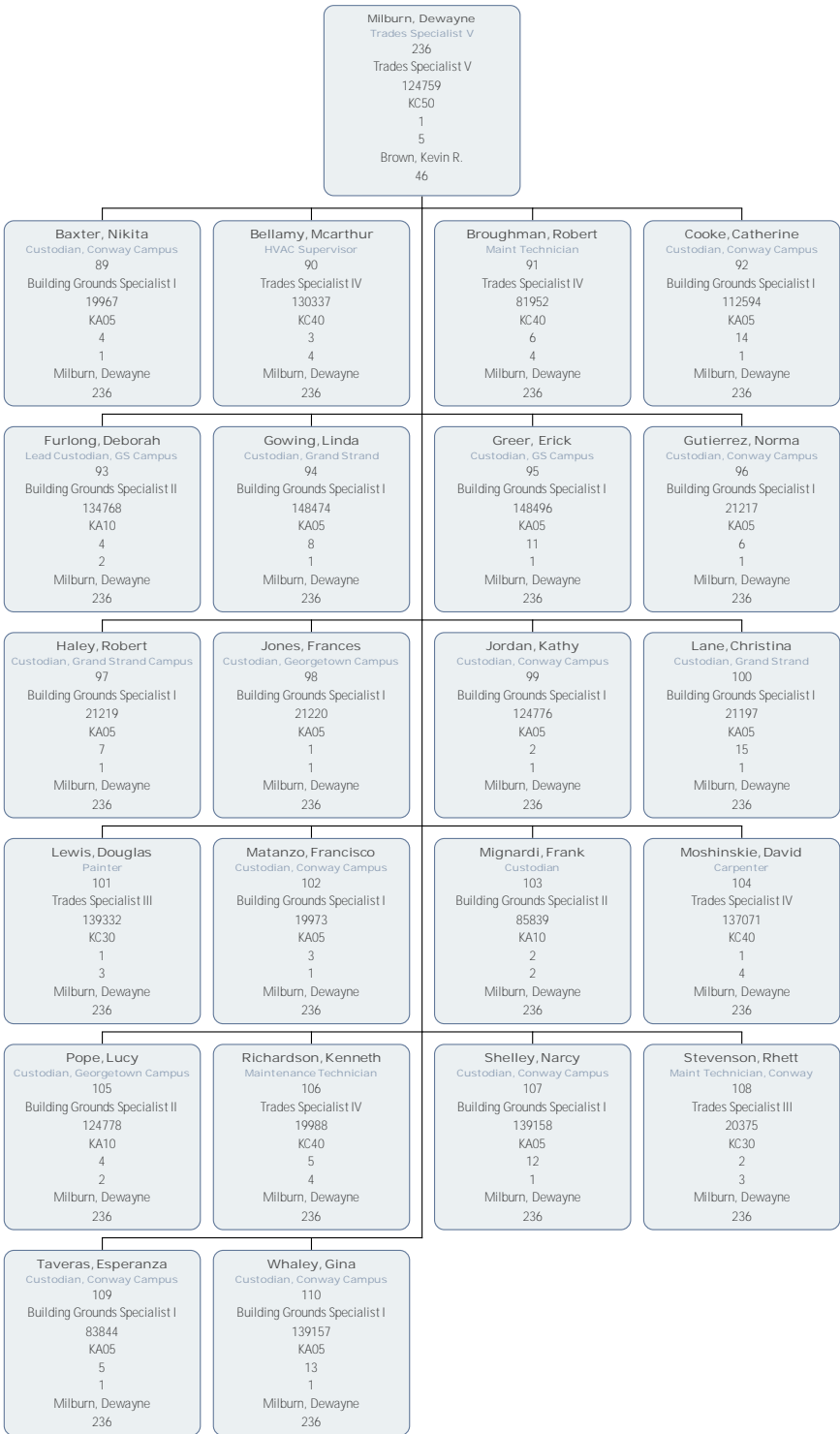
**Milburn, Dewayne**  
Trades Specialist V  
236  
Trades Specialist V  
124759  
KC50  
1  
5  
Brown, Kevin R.  
46

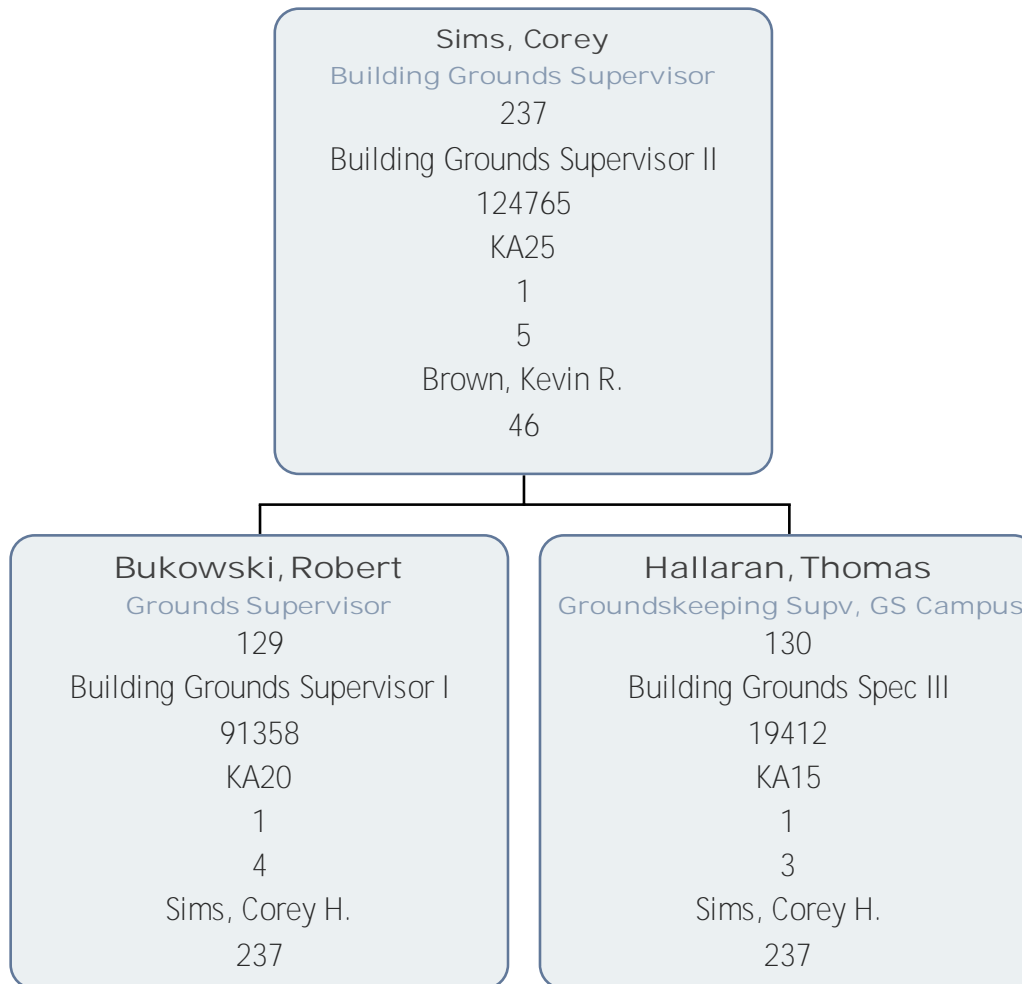
**Sims, Corey**  
Building Grounds Supervisor  
237  
Building Grounds Supervisor II  
124765  
KA25  
1  
5  
Brown, Kevin R.  
46

Lavigne, Scott  
Maint Supervisor, Grand Strand  
235  
Trades Specialist IV  
135268  
KC40  
4  
4  
Brown, Kevin R.  
46

Simms, Karl  
HVAC Technician, Grand Strand  
78  
Trades Specialist IV  
137072  
KC40  
7  
4  
Lavigne, Scott R.  
235

Snow, Michael  
Maint Technician, Grand Strand  
79  
Trades Specialist III  
19990  
KC30  
3  
3  
Lavigne, Scott R.  
235





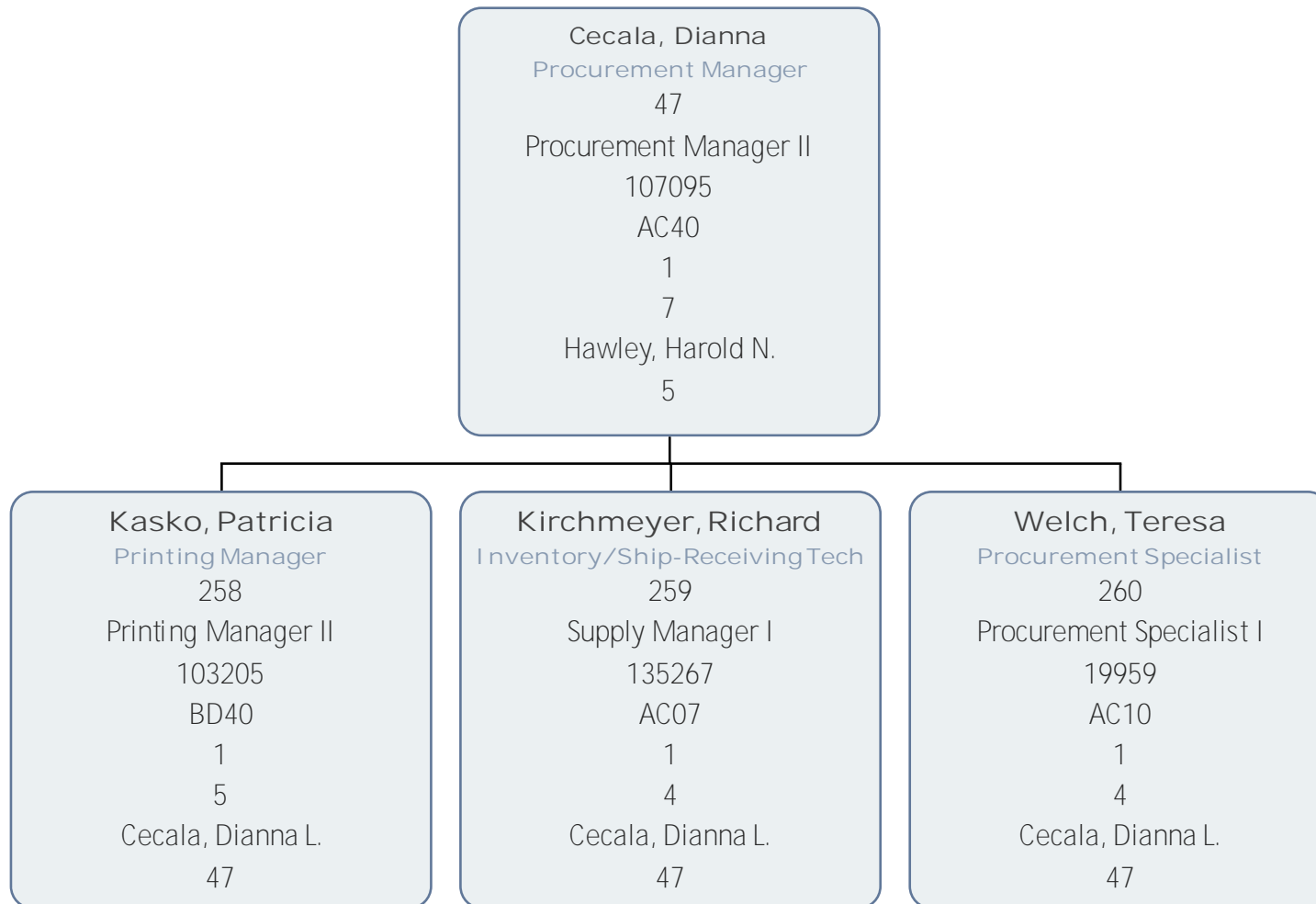


Bukowski, Robert  
Grounds Supervisor  
129  
Building Grounds Supervisor I  
91358  
KA20  
1  
4  
Sims, Corey H.  
237

Todd, Shawn  
Groundskeeper  
238  
Building Grounds Spec III  
139183  
KA15  
4  
3  
Bukowski, Robert A.  
129

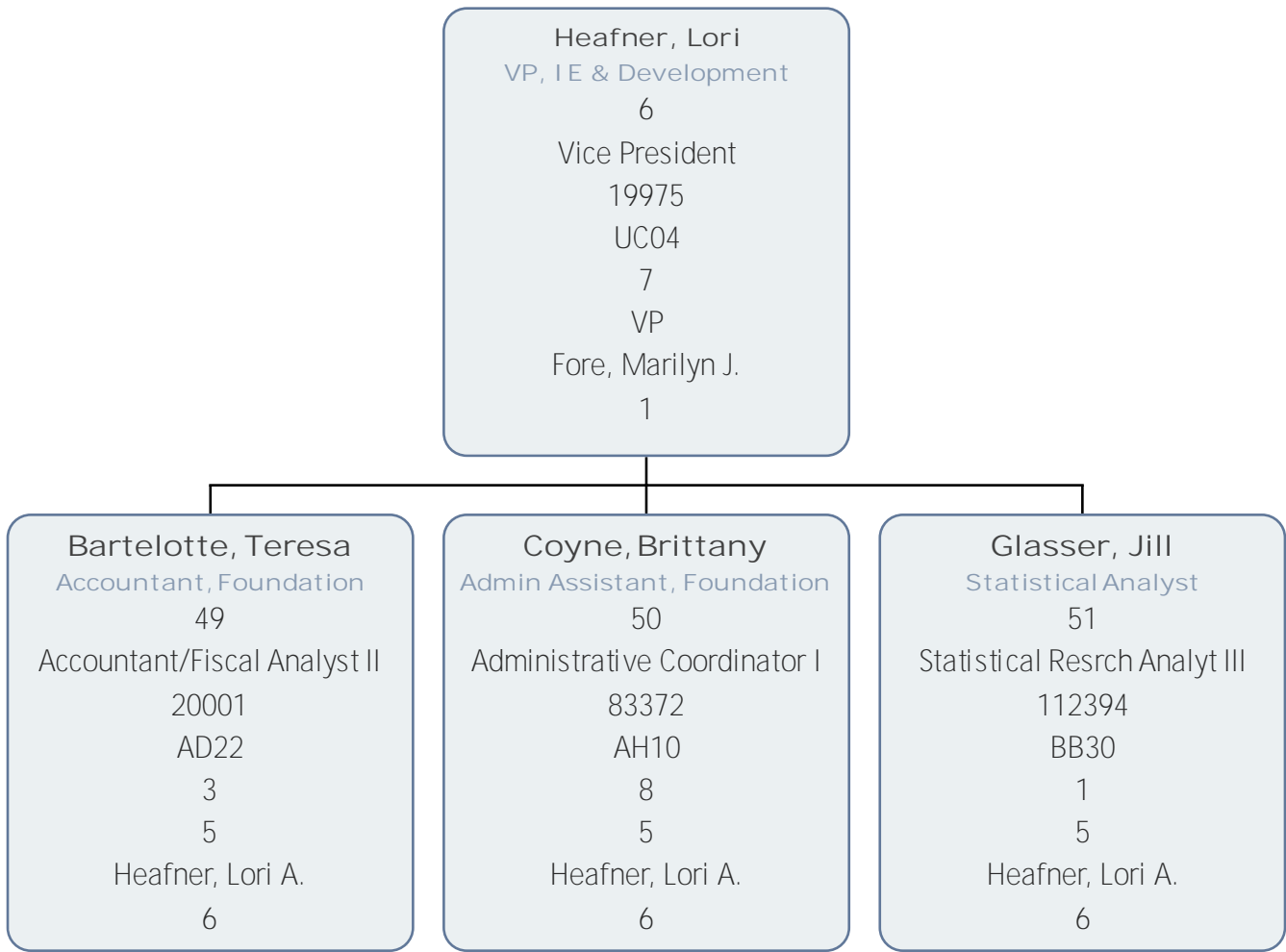
Hallaran, Thomas  
Groundskeeping Supv, GS Campus  
130  
Building Grounds Spec III  
19412  
KA15  
1  
3  
Sims, Corey H.  
237

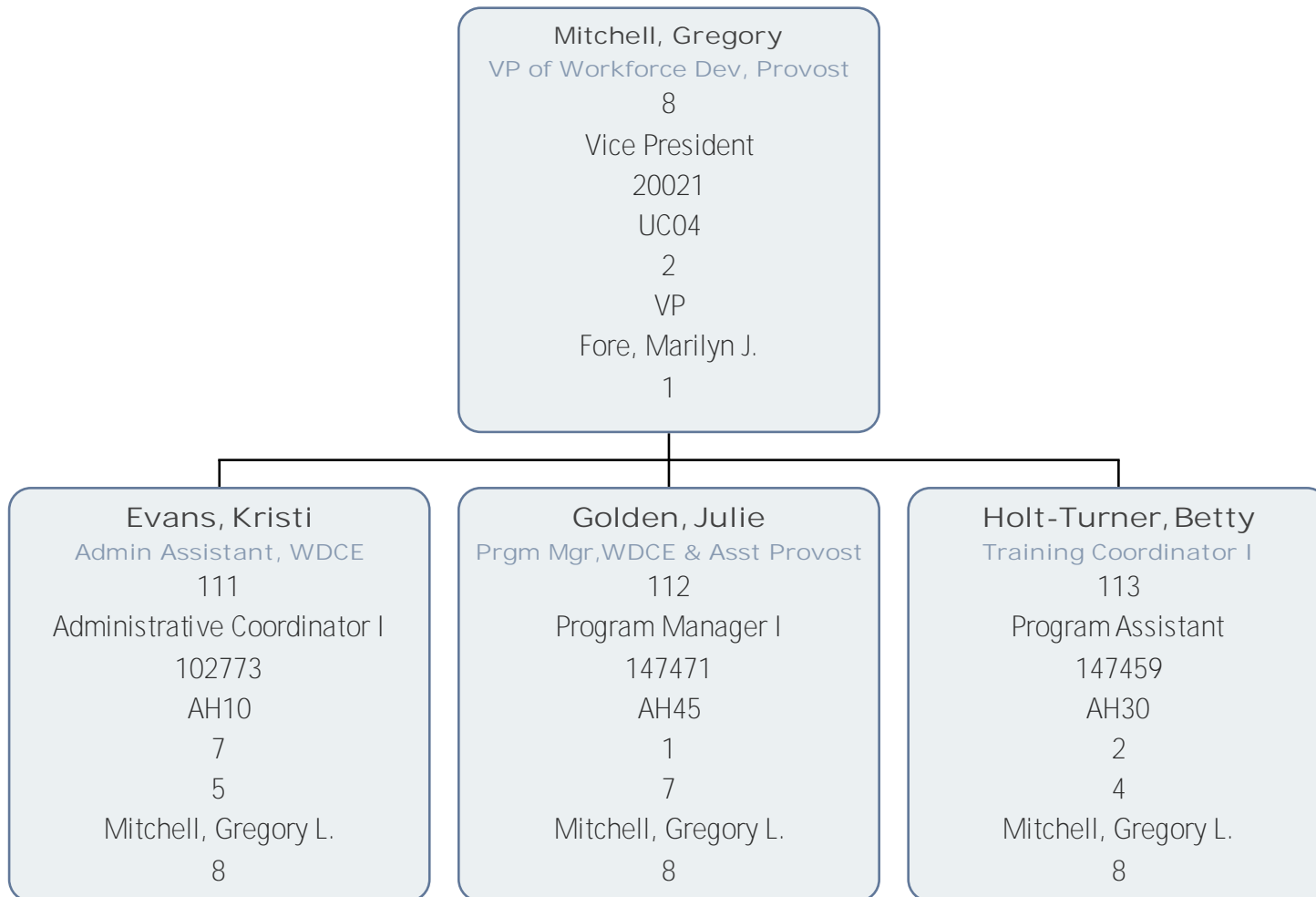
Anders, Spencer  
Groundskeeper, GS Campus  
29  
Building Grounds Specialist II  
139159  
KA10  
2  
2  
Hallaran, Thomas S.  
130



Kasko, Patricia  
Printing Manager  
258  
Printing Manager II  
103205  
BD40  
1  
5  
Cecala, Dianna L.  
47

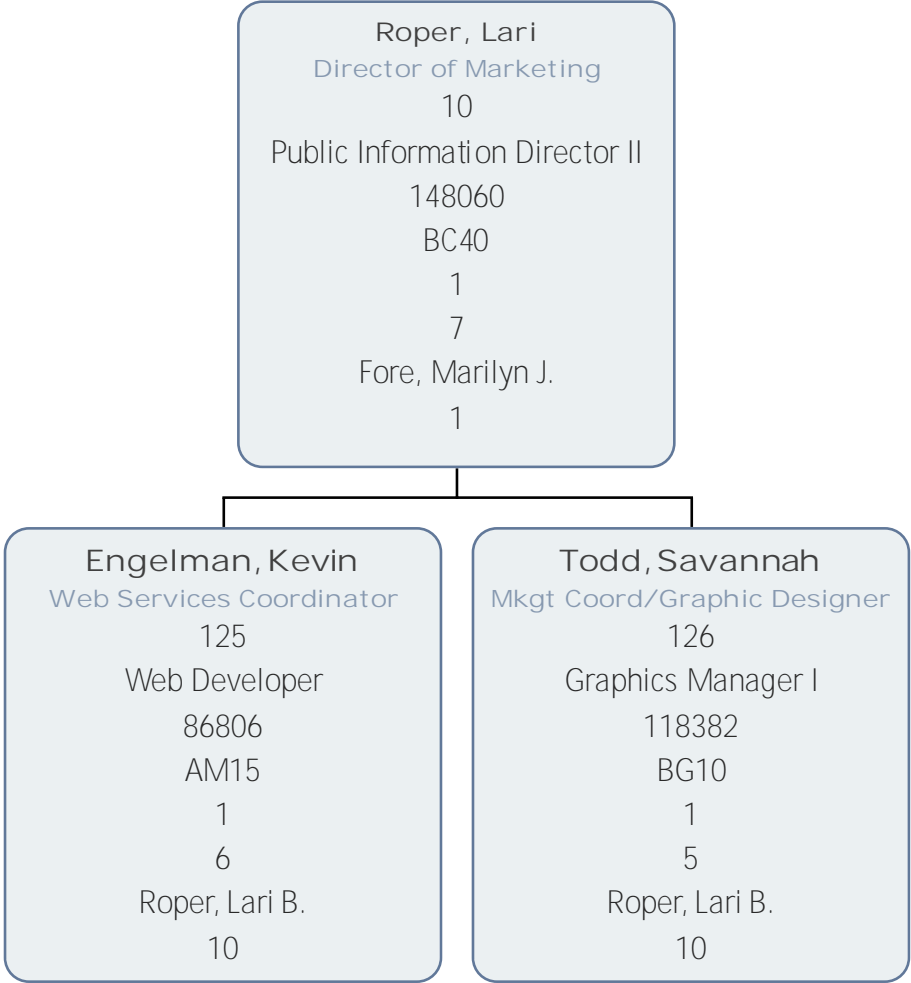
Bender, Mark  
CSR, Print Shop  
76  
Printing Manager I  
148491  
BD30  
2  
4  
Kasko, Patricia L.  
258



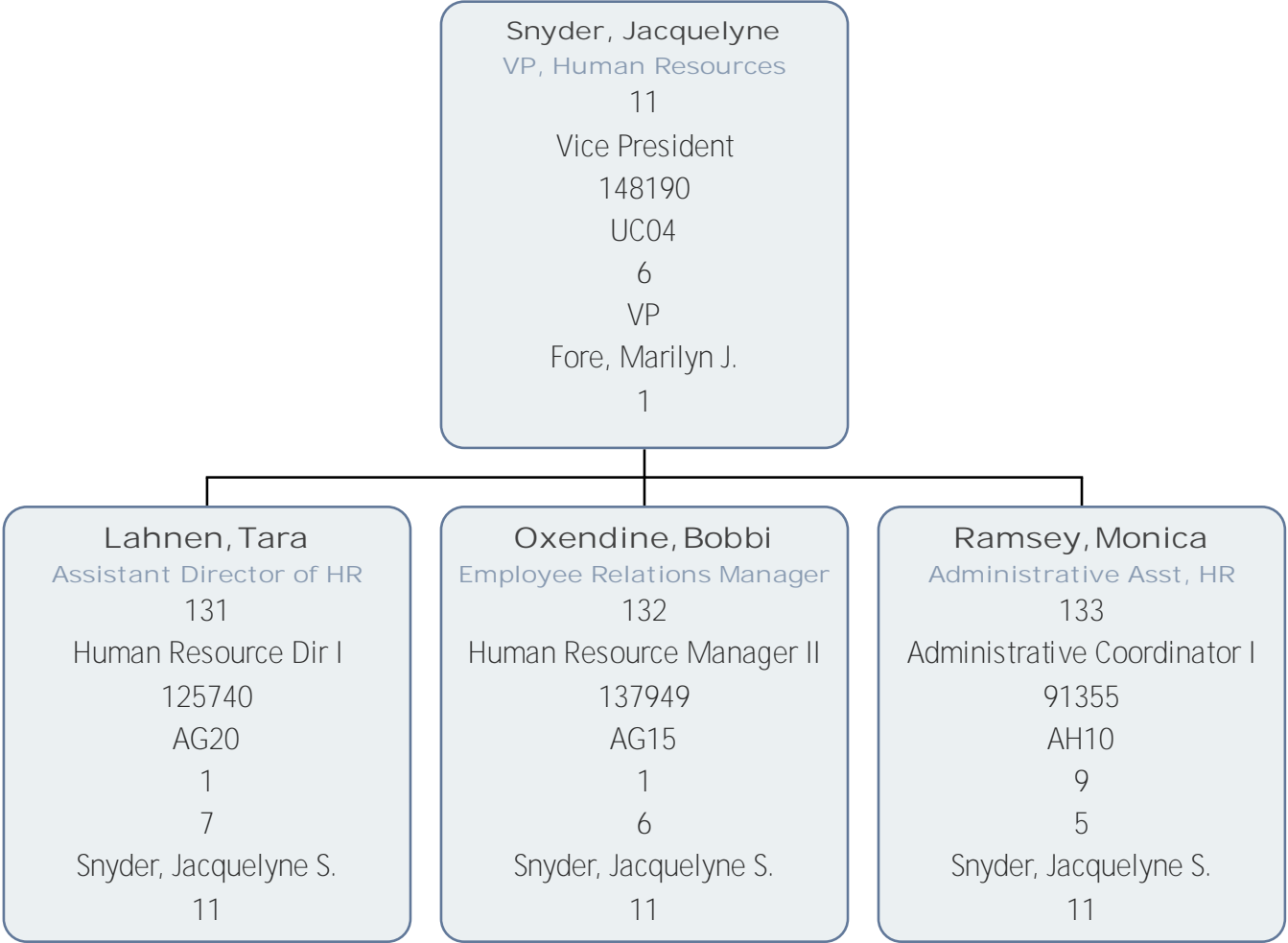


Golden, Julie  
Prgm Mgr,WDCE & Asst Provost  
112  
Program Manager I  
147471  
AH45  
1  
7  
Mitchell, Gregory L.  
8

Lance, Phillip  
Admin Asst, Georgetown Campus  
21  
Administrative Asst  
20167  
AA75  
3  
4  
Golden, Julie A.  
112





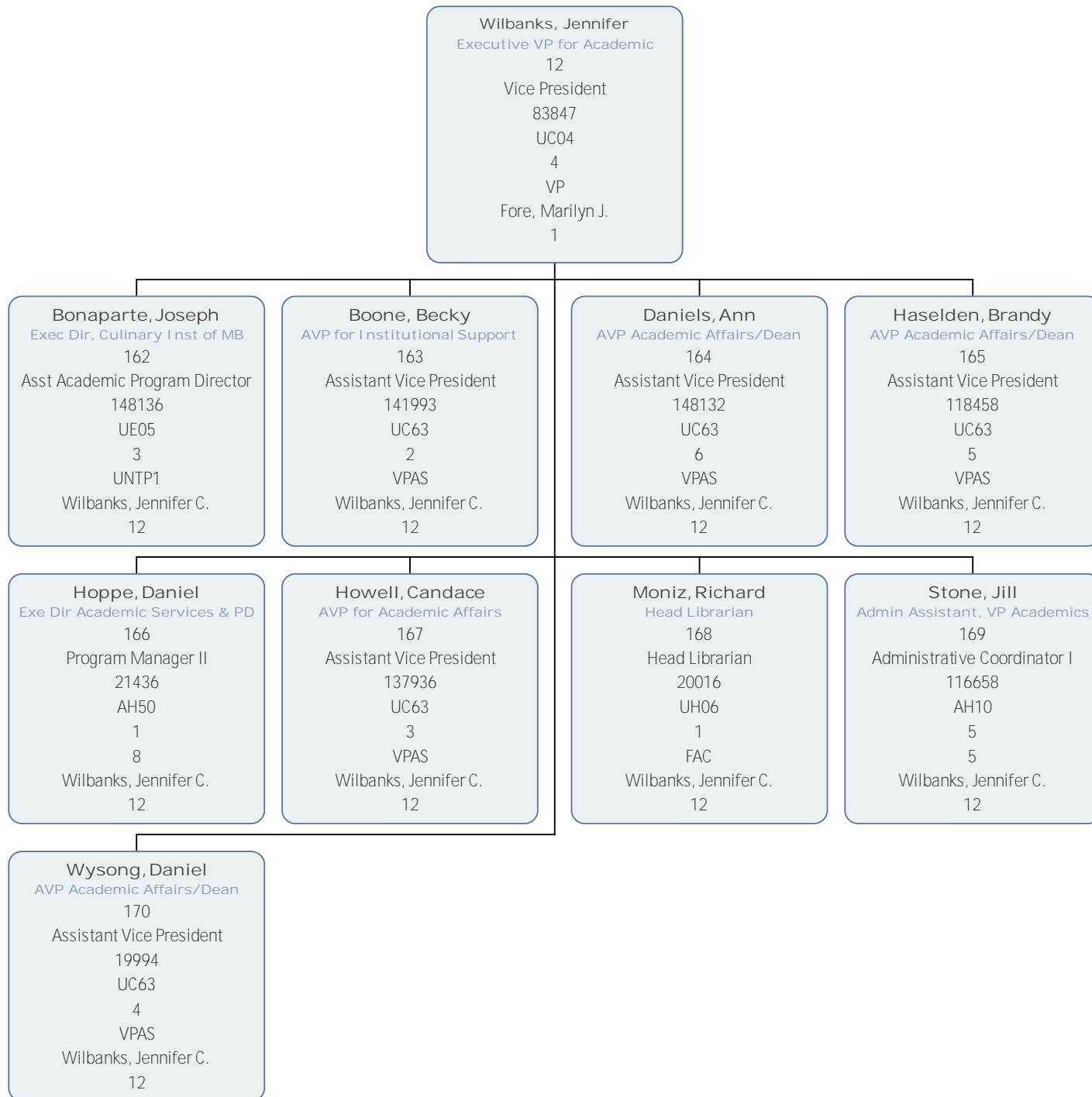


Lahnen, Tara  
Assistant Director of HR  
131  
Human Resource Dir I  
125740  
AG20  
1  
7  
Snyder, Jacquelyne S.  
11

Hearn, Charlotte  
Classification & Comp Manager  
77  
Human Resource Manager II  
118400  
AG15  
2  
6  
Lahnen, Tara M.  
131

Hearn, Charlotte  
Classification & Comp Manager  
77  
Human Resource Manager II  
118400  
AG15  
2  
6  
Lahnen, Tara M.  
131

Lowe, Tammy  
Temporary Employment Manager  
52  
Human Resources Manager I  
85840  
AG10  
3  
5  
Hearn, Charlotte M.  
77



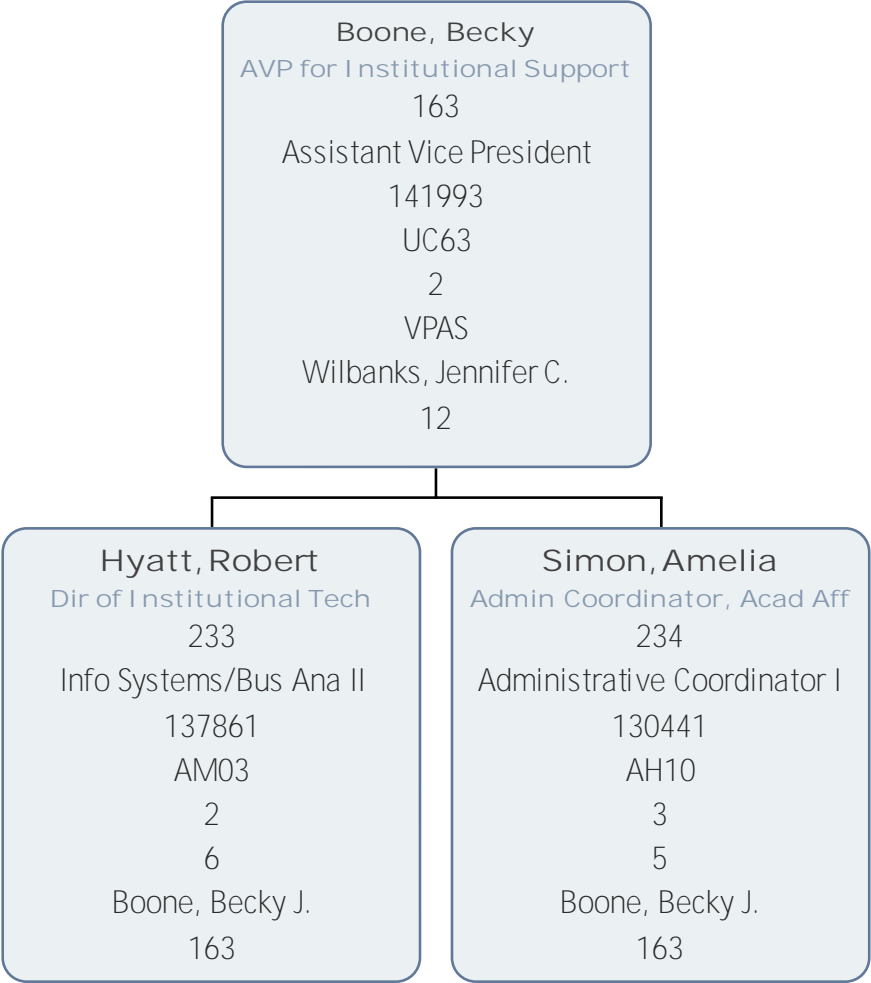
**Bonaparte, Joseph**  
Exec Dir, Culinary Inst of MB  
162  
Asst Academic Program Director  
148136  
UE05  
3  
UNTP1  
Wilbanks, Jennifer C.  
12

**Blount, Geoffrey**  
Professor, Culinary Arts  
229  
Instructor  
148461  
UG70  
131  
FAC  
Bonaparte, Joseph  
162

**Guardiola Wiscovitch, Humberto**  
Professor, Culinary Arts  
230  
Instructor  
147414  
UG70  
120  
FAC  
Bonaparte, Joseph  
162

**Hashmonay, Nathan**  
Professor, Culinary Arts  
231  
Instructor  
140848  
UG70  
116  
FAC  
Bonaparte, Joseph  
162

**Hassett, Kathleen**  
Asst Chair/Prof, Culinary Arts  
232  
Assistant Chair/Head  
109110  
UD15  
19  
FAC  
Bonaparte, Joseph  
162



Daniels, Ann  
AVP Academic Affairs/Dean  
164  
Assistant Vice President  
148132  
UC63  
6  
VPAS  
Wilbanks, Jennifer C.  
12

Aldrich, Lorraine  
Chair/Professor, Nursing  
300  
Department Chair Head  
148216  
UD14  
11  
FAC  
Daniels, Ann B.  
164

Cyganiewicz, Scott  
Chair/Professor, EMT  
301  
Department Chair Head  
20007  
UD14  
6  
FAC  
Daniels, Ann B.  
164

Gleasant, Douglas  
Chair/Professor, Med Imaging  
302  
Department Chair Head  
139165  
UD14  
5  
FAC  
Daniels, Ann B.  
164

Heisler, Audrey  
Chair/Prof, Cosmetology  
303  
Department Chair Head  
135698  
UD14  
10  
FAC  
Daniels, Ann B.  
164

Marcin, Tamala  
Academic Chair/Professor PTA  
304  
Instructor  
72351  
UG70  
144  
FAC  
Daniels, Ann B.  
164

Meeker, Michelle  
Chair/Professor, Dental Hygien  
305  
Department Chair Head  
118439  
UD14  
8  
FAC  
Daniels, Ann B.  
164





Cyganiewicz, Scott  
Chair/Professor, EMT  
301  
Department Chair Head  
20007  
UD14  
6  
FAC  
Daniels, Ann B.  
164

Jordan, Sharon  
Professor, EMT  
295  
Instructor  
141989  
UG70  
59  
FAC  
Cyganiewicz, Scott A.  
301

Neumann, Roxanne  
Assoc Prof, Respiratory Care  
296  
Instructor  
122694  
UG70  
61  
FAC  
Cyganiewicz, Scott A.  
301

Steeves, Gail  
Assoc Prof, HI M/Medical Coding  
297  
Instructor  
139521  
UG70  
31  
FAC  
Cyganiewicz, Scott A.  
301

Tanner, Sheri  
Asst Chair/Professor, Resp  
298  
Assistant Chair/Head  
116569  
UD15  
6  
FAC  
Cyganiewicz, Scott A.  
301

**Gleasant, Douglas**  
Chair/Professor, Med Imaging  
302  
Department Chair Head  
139165  
UD14  
5  
FAC  
Daniels, Ann B.  
164

**Atkins, Caryn**  
Asst Chair/Professor, Rad Tech  
16  
Assistant Chair/Head  
130310  
UD15  
15  
FAC  
Gleasant, Douglas W.  
302

**Brown, Regina**  
Prgm Dir/Assoc Prof, OTA  
17  
Instructor  
135270  
UG70  
108  
FAC  
Gleasant, Douglas W.  
302

**Garavito, Casey**  
Assoc Professor, PTA  
18  
Instructor  
148212  
UG70  
143  
FAC  
Gleasant, Douglas W.  
302

**Martel, Samantha**  
Professor, PTA  
19  
Instructor  
143942  
UG70  
95  
FAC  
Gleasant, Douglas W.  
302

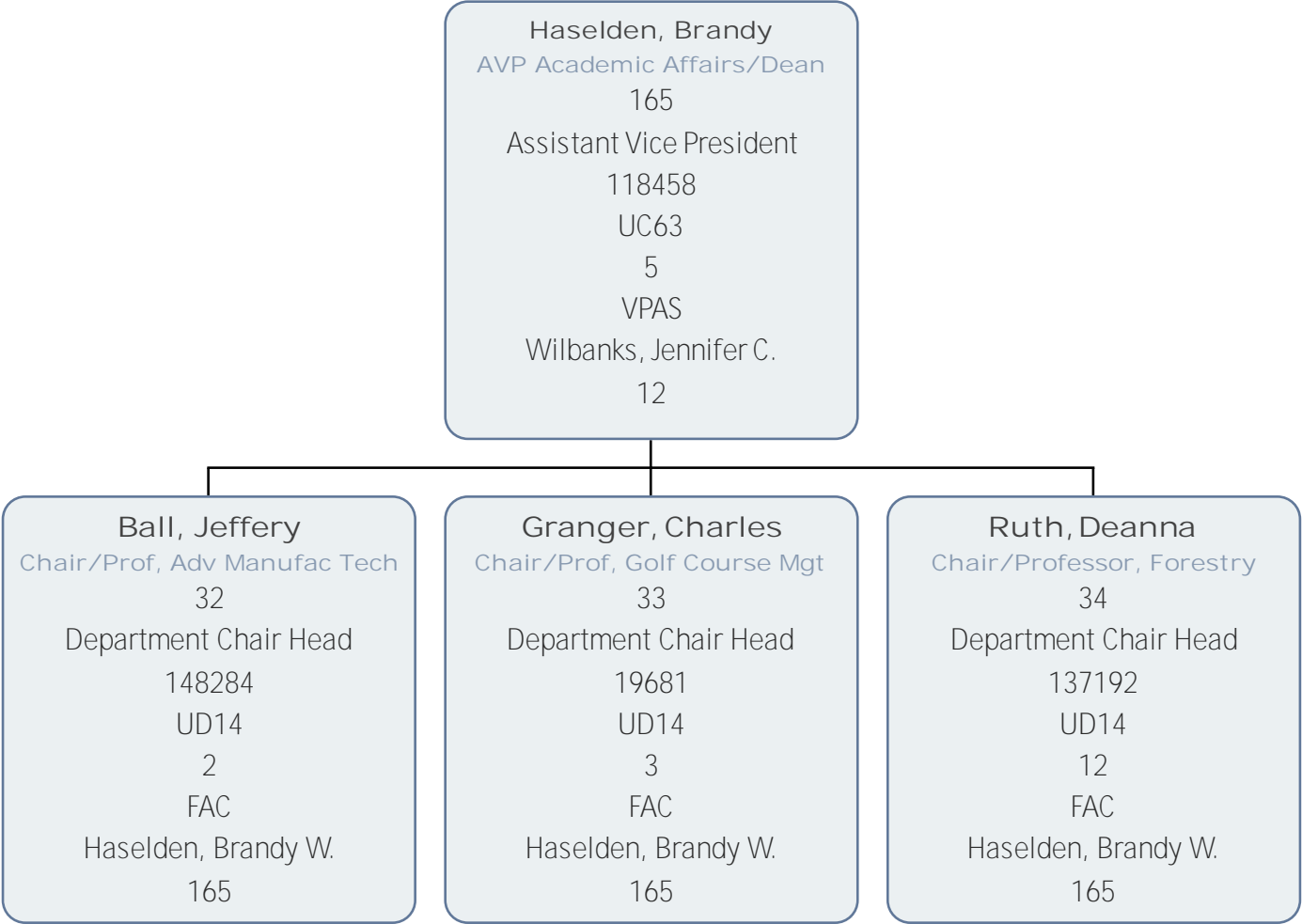
**Stenger, Mary**  
Professor, Rad Tech  
20  
Instructor  
124748  
UG70  
132  
FAC  
Gleasant, Douglas W.  
302

Meeker, Michelle  
Chair/Professor, Dental Hygien  
305  
Department Chair Head  
118439  
UD14  
8  
FAC  
Daniels, Ann B.  
164

Estabrook, Jennifer  
Assoc Professor, Dental  
86  
Instructor  
130315  
UG70  
39  
FAC  
Meeker, Michelle M.  
305

Gasque, Dana  
Admin Asst, Dental Sciences  
87  
Administrative Asst  
148131  
AA75  
1  
4  
Meeker, Michelle M.  
305

Madrid Melendez, Marlene  
Professor, Dental Hygiene  
88  
Instructor  
20558  
UG70  
110  
FAC  
Meeker, Michelle M.  
305



**Ball, Jeffery**  
Chair/Prof, Adv Manufac Tech  
32  
Department Chair Head  
148284  
UD14  
2  
FAC  
Haselden, Brandy W.  
165

**Brown, Richard**  
Professor, Machine Tool  
203  
Instructor  
148457  
UG70  
124  
FAC  
Ball, Jeffery D.  
32

**Coggins, Timothy**  
Asst. Chair/Prof, Machine Tool  
204  
Assistant Chair/Head  
137831  
UD15  
22  
FAC  
Ball, Jeffery D.  
32

**Edwards, Kelly**  
Assoc Professor, Mechatronics  
205  
Instructor  
103363  
UG70  
140  
FAC  
Ball, Jeffery D.  
32

**Foxworth, David**  
Associate Professor, HVAC  
206  
Instructor  
141476  
UG70  
141  
FAC  
Ball, Jeffery D.  
32

**Muldowney, Brian**  
Professor, Welding  
207  
Instructor  
20526  
UG70  
85  
FAC  
Ball, Jeffery D.  
32

**Owens, James**  
Assoc Professor, Welding  
208  
Instructor  
148458  
UG70  
128  
FAC  
Ball, Jeffery D.  
32

**Player, Charles**  
Professor, Machine Tool  
209  
Instructor  
19972  
UG70  
101  
FAC  
Ball, Jeffery D.  
32

**Pratt, James**  
Professor, Welding  
210  
Instructor  
93312  
UG70  
86  
FAC  
Ball, Jeffery D.  
32

**Ragno, Robert**  
Professor, Mechatronics  
211  
Instructor  
148137  
UG70  
126  
FAC  
Ball, Jeffery D.  
32

**Satterfield, Jacob**  
Assoc Professor, Welding  
212  
Instructor  
148258  
UG70  
54  
FAC  
Ball, Jeffery D.  
32

**Smith, Richard**  
Professor, HVAC  
213  
Instructor  
148287  
UG70  
84  
FAC  
Ball, Jeffery D.  
32

**Springs, John**  
Assoc Prof, Outboard Marine  
214  
Instructor  
20268  
UG70  
88  
FAC  
Ball, Jeffery D.  
32

**Stefanyak, Kerry**  
Professor, Diesel Technology  
215  
Instructor  
19770  
UG70  
49  
FAC  
Ball, Jeffery D.  
32

**Wadzinski, Dylan**  
Associate Professor, HVAC  
216  
Instructor  
72347  
UG70  
68  
FAC  
Ball, Jeffery D.  
32

**Watkins, James**  
Asst Chair/Prof, HVAC  
217  
Assistant Chair/Head  
72348  
UD15  
3  
FAC  
Ball, Jeffery D.  
32

**Granger, Charles**  
Chair/Prof, Golf Course Mgt  
33  
Department Chair Head  
19681  
UD14  
3  
FAC  
Haselden, Brandy W.  
165

**Alo, Babatunde**  
Engineering Professor  
22  
Instructor  
135699  
UG70  
74  
FAC  
Granger, Charles F.  
33

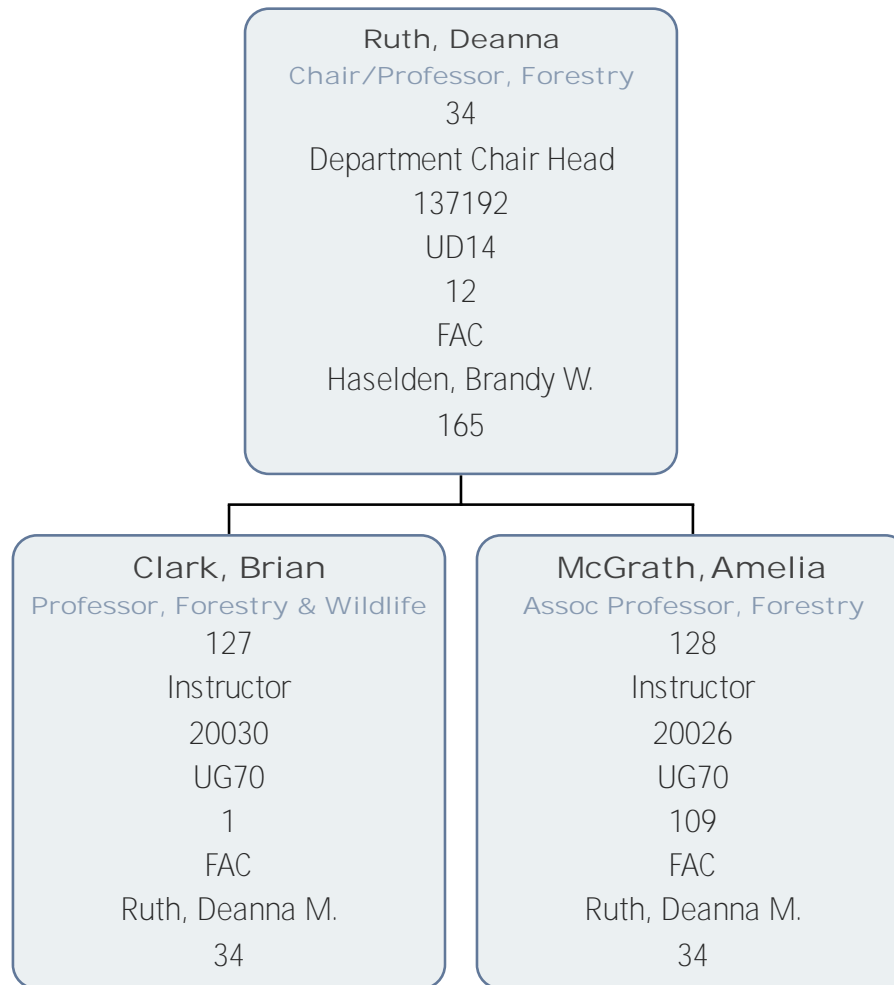
**Kunkle, Charles**  
Asst Chair/Professor, EET  
23  
Assistant Chair/Head  
139151  
UD15  
13  
FAC  
Granger, Charles F.  
33

**Lewis, David**  
Professor Engin Tech  
24  
Instructor  
117934  
UG70  
29  
FAC  
Granger, Charles F.  
33

**Shoemaker, Stephen**  
Professor, Electrical Lineman  
25  
Instructor  
118435  
UG70  
102  
FAC  
Granger, Charles F.  
33

**Vermeland, Robert**  
Assoc Prof, Electrical Lineman  
26  
Instructor  
109138  
UG70  
22  
FAC  
Granger, Charles F.  
33

**Wilkinson, Ashley**  
Prof, Golf & Sports Turf  
27  
Instructor  
104828  
UG70  
65  
FAC  
Granger, Charles F.  
33



**Hoppe, Daniel**  
Exe Dir Academic Services & PD  
166  
Program Manager II  
21436  
AH50  
1  
8  
Wilbanks, Jennifer C.  
12

**Blumberg, Dean**  
Dir, SSTC/EPIC Labs  
55  
Training and Development Dir I  
112601  
AG40  
2  
6  
Hoppe, Daniel W.  
166

**Glassberg, Sean**  
Prof of Comm & Dir of FD  
56  
Assistant Chair/Head  
134765  
UD15  
4  
FAC  
Hoppe, Daniel W.  
166

**Myers, Vincent**  
Dir of Academic Tech Support  
57  
Sr. IT Consultant  
126927  
AM68  
1  
8  
Hoppe, Daniel W.  
166

**Ramberg, Alicia**  
Dir, Instr Desg/Prof Dev Coord  
58  
Training and Development Dir I  
94187  
AG40  
1  
6  
Hoppe, Daniel W.  
166



**Howell, Candace**  
AVP for Academic Affairs  
167  
Assistant Vice President  
137936  
UC63  
3  
VPAS  
Wilbanks, Jennifer C.  
12

**Bittan, Jolita**  
Admin Spec, Academic Affairs  
63  
Administrative Spec II  
135266  
AA50  
24  
3  
Howell, Candace G.  
167

**Burlyn, Allison**  
Chair/Professor, Mathematics  
64  
Department Chair Head  
141460  
UD14  
9  
FAC  
Howell, Candace G.  
167

**Chuska, Minda**  
Chair/Professor, Communications  
65  
Department Chair Head  
134764  
UD14  
17  
FAC  
Howell, Candace G.  
167

**Ekstrom, Nancy**  
Admin Spec, Academic Affairs  
66  
Administrative Spec II  
118399  
AA50  
6  
3  
Howell, Candace G.  
167

**Fieber, Christina**  
Chair/Prof, Biological Science  
67  
Department Chair Head  
20005  
UD14  
1  
FAC  
Howell, Candace G.  
167

**Burlyn, Allison**  
Chair/Professor, Mathematics  
64  
Department Chair Head  
141460  
UD14  
9  
FAC  
Howell, Candace G.  
167

**Butler, Brett**  
Professor, Math/Religion  
240  
Instructor  
20701  
UG70  
12  
FAC  
Burlyn, Allison C.  
64

**Clay, William**  
Professor, Mathematics  
241  
Instructor  
130311  
UG70  
62  
FAC  
Burlyn, Allison C.  
64

**Farinella, Christopher**  
Professor, Mathematics  
242  
Instructor  
94425  
UG70  
27  
FAC  
Burlyn, Allison C.  
64

**Lanza, Brett**  
Professor, Mathematics  
243  
Instructor  
102836  
UG70  
5  
FAC  
Burlyn, Allison C.  
64

**Moser, Randall**  
Asst Chair/Prof, Mathematics  
244  
Assistant Chair/Head  
130402  
UD15  
12  
FAC  
Burlyn, Allison C.  
64

**Priester, Jay**  
Professor, Mathematics  
245  
Instructor  
135675  
UG70  
112  
FAC  
Burlyn, Allison C.  
64

**Sarvis, Laura**  
Assoc Professor, Mathematics  
246  
Instructor  
139162  
UG70  
79  
FAC  
Burlyn, Allison C.  
64

**Spain, Dina**  
Professor, Mathematics  
247  
Instructor  
148286  
UG70  
82  
FAC  
Burlyn, Allison C.  
64

**Stephens, Simona**  
Assoc Prof, Mathematics  
248  
Instructor  
20014  
UG70  
13  
FAC  
Burlyn, Allison C.  
64

**Webb, Heidi**  
Professor, Mathematics  
249  
Instructor  
19789  
UG70  
64  
FAC  
Burlyn, Allison C.  
64

**West, Roy**  
Professor, Mathematics  
250  
Instructor  
109109  
UG70  
69  
FAC  
Burlyn, Allison C.  
64

**Windham, Patricia**  
Assoc Professor, Mathematics  
251  
Instructor  
104827  
UG70  
77  
FAC  
Burlyn, Allison C.  
64

**Zup, Ramona**  
Professor, Mathematics  
252  
Instructor  
104829  
UG70  
11  
FAC  
Burlyn, Allison C.  
64

**Chuska, Minda**  
Chair/Professor, Communications  
65  
Department Chair Head  
134764  
UD14  
17  
FAC  
Howell, Candace G.  
167

**Barker, Jonathan**  
Professor, English  
261  
Instructor  
139333  
UG70  
37  
FAC  
Chuska, Minda L.  
65

**Bauer, Janessa**  
Assoc Professor, Speech  
262  
Instructor  
136310  
UG70  
137  
FAC  
Chuska, Minda L.  
65

**Beckham, William**  
Professor, English  
263  
Instructor  
137399  
UG70  
134  
FAC  
Chuska, Minda L.  
65

**Bonaparte, Christine**  
Professor, Communications  
264  
Instructor  
94014  
UG70  
51  
FAC  
Chuska, Minda L.  
65

**Chowning, James**  
Professor, Speech  
265  
Instructor  
19787  
UG70  
76  
FAC  
Chuska, Minda L.  
65

**Grace, Falicya**  
Assoc Professor, English  
266  
Instructor  
19998  
UG70  
24  
FAC  
Chuska, Minda L.  
65

**Crolley, Paul**  
Professor, Psychology  
267  
Instructor  
147119  
UG70  
41  
FAC  
Chuska, Minda L.  
65

**Falbo Zerkel, Valerie**  
Professor, Spanish  
268  
Instructor  
148481  
UG70  
133  
FAC  
Chuska, Minda L.  
65

**Flood, Michael**  
Professor, English  
269  
Instructor  
20025  
UG70  
33  
FAC  
Chuska, Minda L.  
65

**Graham, Tracey**  
Asst Chair/Prof Anthr&Theatre  
270  
Assistant Chair/Head  
137864  
UD15  
18  
FAC  
Chuska, Minda L.  
65

**Heafner, Christopher**  
Asst Chair/Professor, English  
271  
Assistant Chair/Head  
147118  
UD15  
8  
FAC  
Chuska, Minda L.  
65

**Hedges, Michael**  
Professor, English  
272  
Instructor  
126532  
UG70  
57  
FAC  
Chuska, Minda L.  
65

**Holland, Jeremy**  
Assoc Professor, Sociology  
273  
Instructor  
130282  
UG70  
30  
FAC  
Chuska, Minda L.  
65

**Holmes-Smith, Yashica**  
Professor, Psychology  
274  
Instructor  
122698  
UG70  
43  
FAC  
Chuska, Minda L.  
65

**Kane, Michael**  
Assoc Professor, English  
275  
Instructor  
20028  
UG70  
127  
FAC  
Chuska, Minda L.  
65

**Klein, Samuel**  
Professor, History  
276  
Instructor  
122695  
UG70  
40  
FAC  
Chuska, Minda L.  
65

**LeFevre, Amy**  
Assoc Professor, Psychology  
277  
Instructor  
130313  
UG70  
100  
FAC  
Chuska, Minda L.  
65

**Lencina, Maravillas**  
Assoc Professor, Spanish  
278  
Instructor  
137190  
UG70  
80  
FAC  
Chuska, Minda L.  
65

**Luce, Russell**  
Professor, Communications  
279  
Instructor  
115034  
UG70  
55  
FAC  
Chuska, Minda L.  
65

**Matson, Meredith**  
Professor, Psychology  
280  
Instructor  
148285  
UG70  
45  
FAC  
Chuska, Minda L.  
65

**Nguyen, Aglaia**  
Professor, English  
281  
Instructor  
140842  
UG70  
123  
FAC  
Chuska, Minda L.  
65

**Nottingham, Kerri**  
Assoc Professor, Psychology  
282  
Instructor  
140808  
UG70  
107  
FAC  
Chuska, Minda L.  
65

**Perez, Eduardo**  
Associate Professor, Sociology  
283  
Instructor  
139338  
UG70  
129  
FAC  
Chuska, Minda L.  
65

**Roberts, Michael**  
Professor, English  
284  
Instructor  
104825  
UG70  
3  
FAC  
Chuska, Minda L.  
65

**Rogers, Leila**  
Professor, Sociology  
285  
Instructor  
122697  
UG70  
130  
FAC  
Chuska, Minda L.  
65

**Saltzstein, Peter**  
Professor, Philosophy  
286  
Instructor  
130403  
UG70  
67  
FAC  
Chuska, Minda L.  
65

**Snow, Mary**  
Professor, College Skills  
287  
Instructor  
83850  
UG70  
20  
FAC  
Chuska, Minda L.  
65

**Thompson, William**  
Professor, College Skills  
288  
Instructor  
103108  
UG70  
113  
FAC  
Chuska, Minda L.  
65

**Wheeler, Christopher**  
Professor, English  
289  
Instructor  
139164  
UG70  
96  
FAC  
Chuska, Minda L.  
65

**Wickham, Kimberly**  
Associate Professor, English  
290  
Instructor  
104830  
UG70  
46  
FAC  
Chuska, Minda L.  
65

**Williams, Michael**  
Asst Chair/Prof, English  
291  
Assistant Chair/Head  
124747  
UD15  
9  
FAC  
Chuska, Minda L.  
65

Fieber, Christina  
Chair/Prof, Biological Science  
67  
Department Chair Head  
20005  
UD14  
1  
FAC  
Howell, Candace G.  
167

**Blackmon, Scott**  
Professor, Biological Sciences  
312  
Instructor  
19772  
UG70  
15  
FAC  
Fieber, Christina B.  
67

**Christian, Georgia**  
Professor, Biological Sciences  
313  
Instructor  
126527  
UG70  
53  
FAC  
Fieber, Christina B.  
67

**Cohen, Stuart**  
Professor, Chemistry/Physics  
314  
Instructor  
139334  
UG70  
63  
FAC  
Fieber, Christina B.  
67

**Craig, Jonathan**  
Professor, Astronomy  
315  
Instructor  
140847  
UG70  
103  
FAC  
Fieber, Christina B.  
67

**Davis, Lauren**  
Professor, Bio Sciences  
316  
Instructor  
105191  
UG70  
90  
FAC  
Fieber, Christina B.  
67

**Ekechukwu, Peter**  
Professor, Biological Sciences  
317  
Instructor  
122696  
UG70  
32  
FAC  
Fieber, Christina B.  
67

**Fandel, Mark**  
Professor, Biological Sciences  
318  
Instructor  
102774  
UG70  
125  
FAC  
Fieber, Christina B.  
67

**Forringer, Brooke**  
Assoc Professor, A & P  
319  
Instructor  
20013  
UG70  
2  
FAC  
Fieber, Christina B.  
67

**Fowler, Rachel**  
Professor, Biological Sci  
320  
Instructor  
139336  
UG70  
89  
FAC  
Fieber, Christina B.  
67

**Heath, Jonathan**  
Asst Chair/Prof, Chemistry  
321  
Assistant Chair/Head  
130335  
UD15  
2  
FAC  
Fieber, Christina B.  
67

**King, Walter**  
Professor, Physics/Natural Sci  
322  
Instructor  
21498  
UG70  
14  
FAC  
Fieber, Christina B.  
67

**Loftin, Charles**  
Professor, Biological Science  
323  
Instructor  
140845  
UG70  
106  
FAC  
Fieber, Christina B.  
67

**Lowes, Sandra**  
Asst Chair/Prof, Biological Sc  
324  
Assistant Chair/Head  
137193  
UD15  
7  
FAC  
Fieber, Christina B.  
67

**Markley, John**  
Professor, Biological Science  
325  
Instructor  
83846  
UG70  
19  
FAC  
Fieber, Christina B.  
67

**McCauley, George**  
Professor, Science, Golf&Sport  
326  
Instructor  
141451  
UG70  
105  
FAC  
Fieber, Christina B.  
67

**Plunket, John**  
Professor, Biological Sciences  
327  
Instructor  
124744  
UG70  
52  
FAC  
Fieber, Christina B.  
67

**Roberts, Lauren**  
Assoc Prof, Biological Sciences  
328  
Instructor  
102953  
UG70  
35  
FAC  
Fieber, Christina B.  
67

**Robinson, Kristin**  
Professor, A&P  
329  
Instructor  
146876  
UG70  
8  
FAC  
Fieber, Christina B.  
67

**Rotaru, Ileana**  
Professor, Chemistry  
330  
Instructor  
148288  
UG70  
97  
FAC  
Fieber, Christina B.  
67

**Thompson, David**  
Professor, Biological Sciences  
331  
Instructor  
20032  
UG70  
83  
FAC  
Fieber, Christina B.  
67

**Whiteside, Jason**  
Professor, Biological Sciences  
332  
Instructor  
134766  
UG70  
71  
FAC  
Fieber, Christina B.  
67

Moniz, Richard  
Head Librarian  
168  
Head Librarian  
20016  
UH06  
1  
FAC  
Wilbanks, Jennifer C.  
12

Fickenworth, Jennifer  
Electronic Resources Librarian  
114  
Assistant Librarian  
116600  
UL03  
1  
FAC  
Moniz, Richard J.  
168

Henry, Jo  
Asst Ref & Inst Librarian-GT  
115  
Assistant Librarian  
148473  
UL03  
2  
FAC  
Moniz, Richard J.  
168

Norkus, Priscilla  
Access Services Manager  
116  
Library Specialist  
141982  
CD20  
2  
4  
Moniz, Richard J.  
168

Tyson, Roberta  
Coord of Tech Svc/Resc Sharing  
117  
Library Specialist  
130427  
CD20  
1  
4  
Moniz, Richard J.  
168

Williams, Christopher  
Librarian/Coord Ref Services  
118  
Associate Librarian  
137933  
UL05  
2  
FAC  
Moniz, Richard J.  
168

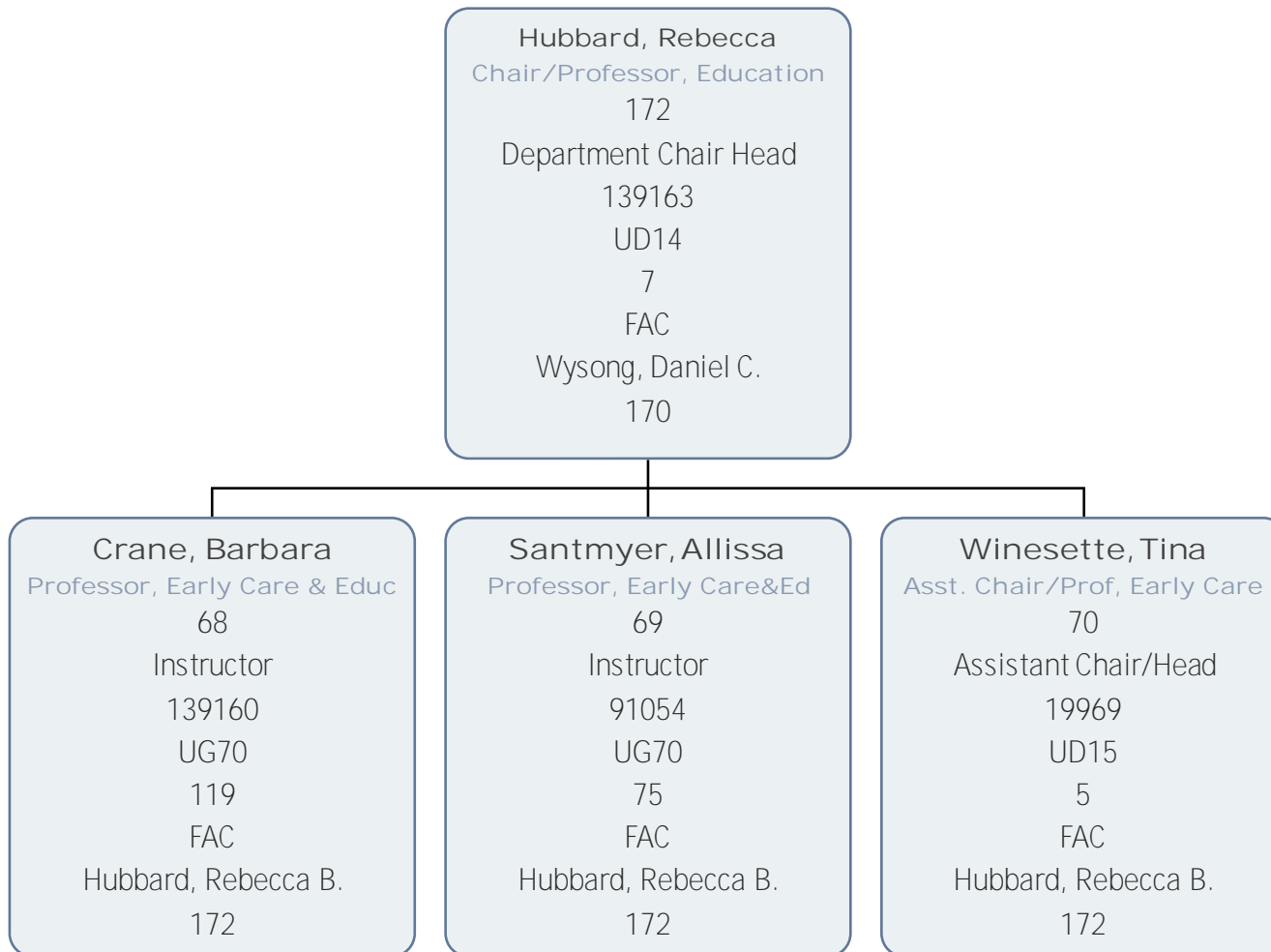
Wysong, Daniel  
AVP Academic Affairs/Dean  
170  
Assistant Vice President  
19994  
UC63  
4  
VPAS  
Wilbanks, Jennifer C.  
12

Hubbard, Rebecca  
Chair/Professor, Education  
172  
Department Chair Head  
139163  
UD14  
7  
FAC  
Wysong, Daniel C.  
170

McQueen, Donna  
Chair/Professor, Legal Studies  
173  
Department Chair Head  
19997  
UD14  
16  
FAC  
Wysong, Daniel C.  
170

Strong, Theresa  
Chair/Professor, Business  
174  
Department Chair Head  
147123  
UD14  
18  
FAC  
Wysong, Daniel C.  
170

Timmons, Lou Ann  
Chair/Professor, Info Tech  
175  
Department Chair Head  
82080  
UD14  
19  
FAC  
Wysong, Daniel C.  
170



**McQueen, Donna**  
Chair/Professor, Legal Studies  
173  
Department Chair Head  
1997  
UD14  
16  
FAC  
Wysong, Daniel C.  
170

**Bennett, Jeanne**  
Professor Human Services  
81  
Instructor  
124807  
UG70  
115  
FAC  
McQueen, Donna W.  
173

**Causey, Renee**  
Professor Human Services  
82  
Instructor  
139335  
UG70  
18  
FAC  
McQueen, Donna W.  
173

**Cook, Kathryn**  
Professor, Legal Studies  
83  
Instructor  
134767  
UG70  
72  
FAC  
McQueen, Donna W.  
173

**Muncey, Larry**  
Professor, Criminal Justice  
84  
Instructor  
85139  
UG70  
36  
FAC  
McQueen, Donna W.  
173

**Scott, Jeffrey**  
Asst Chair/Prof, Crim Justice  
85  
Assistant Chair/Head  
147120  
UD15  
16  
FAC  
McQueen, Donna W.  
173



**Strong, Theresa**  
Chair/Professor, Business  
174  
Department Chair Head  
147123  
UD14  
18  
FAC  
Wysong, Daniel C.  
170

**Carraway, Beth**  
Professor, Gen Business  
144  
Instructor  
137194  
UG70  
4  
FAC  
Strong, Theresa M.  
174

**Clark, John**  
Professor, Economics  
145  
Instructor  
85160  
UG70  
28  
FAC  
Strong, Theresa M.  
174

**Collins, Karen**  
Professor, Accounting  
146  
Instructor  
112763  
UG70  
60  
FAC  
Strong, Theresa M.  
174

**Donnelly, Tina**  
Professor, Business  
147  
Instructor  
118417  
UG70  
42  
FAC  
Strong, Theresa M.  
174

**Greenlee, Tanya**  
Assoc Professor, Accounting  
148  
Instructor  
139182  
UG70  
99  
FAC  
Strong, Theresa M.  
174

**Timmons, Lou Ann**  
Chair/Professor, Info Tech  
175  
Department Chair Head  
82080  
UD14  
19  
FAC  
Wysong, Daniel C.  
170

**Carman, Jason**  
Professor, Info Technology  
154  
Instructor  
105491  
UG70  
44  
FAC  
Timmons, Lou Ann  
175

**Greenawalt, Stanton**  
Professor, Information Tech  
155  
Instructor  
118487  
UG70  
25  
FAC  
Timmons, Lou Ann  
175

**Mroz, William**  
Assoc Professor, Digital Arts  
156  
Instructor  
140846  
UG70  
26  
FAC  
Timmons, Lou Ann  
175

**Pirozzi, Melissa**  
Asst Chair/Prof, Digital Arts  
157  
Assistant Chair/Head  
137828  
UD15  
21  
FAC  
Timmons, Lou Ann  
175

**Servedio, Matthew**  
Professor, Computer Tech  
158  
Instructor  
126531  
UG70  
56  
FAC  
Timmons, Lou Ann  
175

**Tessenaar, Brian**  
Professor, Computer Tech  
159  
Instructor  
20023  
UG70  
73  
FAC  
Timmons, Lou Ann  
175

**Walker, Roland**  
Professor, Computer Tech  
160  
Instructor  
139168  
UG70  
98  
FAC  
Timmons, Lou Ann  
175